



[Go to Product page](#)

Datasheet for ABIN6740669

anti-PTBP1 antibody (C-Term)

1 Image

Overview

Quantity:	100 µL
Target:	PTBP1
Binding Specificity:	C-Term
Reactivity:	Human, Mouse, Rat, Cow, Dog, Guinea Pig, Horse, Rabbit, Zebrafish (Danio rerio), Pig, Monkey, Xenopus laevis, Chicken, Bat
Host:	Rabbit
Clonality:	Polyclonal
Conjugate:	This PTBP1 antibody is un-conjugated
Application:	Western Blotting (WB)

Product Details

Immunogen:	Synthetic peptide from C-Terminus of human PTBP1 (Q29099, NP_002810). Percent identity by BLAST analysis: Human, Chimpanzee, Gorilla, Gibbon, Monkey, Galago, Marmoset, Mouse, Rat, Elephant, Dog, Bovine, Bat, Rabbit, Horse, Pig, Opossum, Guinea pig, Turkey, Zebra finch, Chicken, Platypus, Lizard, Xenopus, Zebrafish (100%), Salmon (92%), Hamster (90%), Drosophila (83%). Type of Immunogen: Synthetic peptide
Isotype:	IgG
Specificity:	Human PTBP1
Predicted Reactivity:	Percent identity by BLAST analysis: Human, Mouse, Rat, Dog, Bovine, Horse, Pig, Guinea pig,

Product Details

Chicken, Xenopus, Zebrafish (100%).

Purification: Immunoaffinity purified

Target Details

Target: PTBP1

Alternative Name: PTBP1 ([PTBP1 Products](#))

Background: Name/Gene ID: PTBP1

Synonyms: PTBP1, HnRNP I, HNRNPI, HNRPI, PTB, PPTB, PTB2, PTB4, RNA-binding protein, HNRNP-I, PTB-1, PTB-T, PTB3

Gene ID: 5725

NCBI Accession: [NP_002810](#)

UniProt: [P26599](#)

Pathways: [Regulation of Muscle Cell Differentiation](#)

Application Details

Application Notes: Approved: WB (0.2 - 1 µg/mL)

Usage: Western Blot: Suggested dilution at 1 µg/mL in 5 % skim milk / PBS buffer, and HRP conjugated anti-Rabbit IgG should be diluted in 1: 50,000 - 100,000 as second antibody. ELISA titer in peptide based assay: 1:12500.

Comment: Target Species of Antibody: Human

Restrictions: For Research Use only

Handling

Format: Lyophilized

Reconstitution: Distilled water

Concentration: Lot specific

Buffer: Lyophilized from PBS with 2 % sucrose

Handling Advice: Avoid repeat freeze-thaw cycles.

Handling

Storage: 4 °C, -20 °C

Storage Comment: Long term: -20°C, the use of 50% glycerol is recommended if storing aliquots in -20°C for long term use (up to 1 year)
Short term (less than 1 week): 4°C. Avoid freeze-thaw cycles.

Images

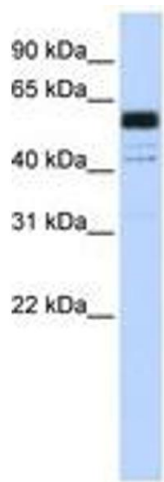


Image 1.