

Datasheet for ABIN6740677
anti-SFRS8 antibody (AA 36-85)[Go to Product page](#)

1 Image

Overview

Quantity:	100 µL
Target:	SFRS8 (SFSWAP)
Binding Specificity:	AA 36-85
Reactivity:	Human, Mouse, Rat, Monkey, Guinea Pig, Horse, Rabbit, Cow, Dog, Hamster, Pig
Host:	Rabbit
Clonality:	Polyclonal
Conjugate:	This SFRS8 antibody is un-conjugated
Application:	Western Blotting (WB)

Product Details

Immunogen:	Synthetic peptide located between aa36-85 of human SFSWAP (B2RN45, NP_004583). Percent identity by BLAST analysis: Human, Chimpanzee, Gorilla, Gibbon, Monkey, Galago, Mouse, Rat, Hamster, Dog, Bovine, Rabbit, Horse, Pig, Guinea pig (100%), Bat, Opossum (92%). Type of Immunogen: Synthetic peptide
Isotype:	IgG
Specificity:	Human SFSWAP / SFRS8
Predicted Reactivity:	Percent identity by BLAST analysis: Human, Mouse (100%).
Purification:	Immunoaffinity purified

Target Details

Target:	SFRS8 (SFSWAP)
Alternative Name:	SFSWAP / SWAP (SFSWAP Products)
Background:	Name/Gene ID: SFSWAP Synonyms: SFSWAP, SFRS8, SWAP
Gene ID:	6433
NCBI Accession:	NP_004583
UniProt:	Q12872
Pathways:	Ribonucleoprotein Complex Subunit Organization

Application Details

Application Notes:	Approved: WB (0.2 - 1 µg/mL) Usage: Western Blot: Suggested dilution at 1 µg/mL in 5 % skim milk / PBS buffer, and HRP conjugated anti-Rabbit IgG should be diluted in 1: 50,000 - 100,000 as second antibody. ELISA titer in peptide based assay: 1:62500.
Comment:	Target Species of Antibody: Human
Restrictions:	For Research Use only

Handling

Format:	Lyophilized
Reconstitution:	Distilled water
Concentration:	Lot specific
Buffer:	Lyophilized from PBS with 2 % sucrose
Handling Advice:	Avoid repeat freeze-thaw cycles.
Storage:	4 °C,-20 °C
Storage Comment:	Long term: -20°C, the use of 50% glycerol is recommended if storing aliquots in -20°C for long term use (up to 1 year) Short term (less than 1 week): 4°C. Avoid freeze-thaw cycles.

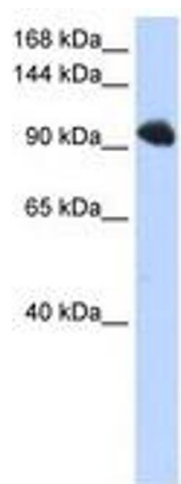


Image 1.