

Datasheet for ABIN6740681  
**anti-HNRPDL antibody (C-Term)**[Go to Product page](#)

## 1 Image

## Overview

Quantity:	100 µL
Target:	HNRPDL
Binding Specificity:	C-Term
Reactivity:	Human, Mouse, Rat, Dog, Cow, Guinea Pig, Zebrafish (Danio rerio), Horse, Rabbit, Chicken, Monkey, Hamster, Pig
Host:	Rabbit
Clonality:	Polyclonal
Conjugate:	This HNRPDL antibody is un-conjugated
Application:	Western Blotting (WB)

## Product Details

Immunogen:	Synthetic peptide from C-Terminus of human HNRNPDL (O14979). Percent identity by BLAST analysis: Human, Chimpanzee, Gorilla, Gibbon, Monkey, Galago, Marmoset, Mouse, Rat, Hamster, Elephant, Panda, Dog, Bovine, Rabbit, Horse, Pig, Opossum, Guinea pig, Turkey, Zebra finch, Chicken, Platypus, Lizard (100%), Xenopus (92%).  Type of Immunogen: Synthetic peptide
Isotype:	IgG
Specificity:	Human HNRPDL
Predicted Reactivity:	Percent identity by BLAST analysis: Mouse, Rat, Dog, Bovine, Pig, Guinea pig, Chicken (100%).
Purification:	Immunoaffinity purified

## Target Details

Target:	HNRPDL
Alternative Name:	HNRNPDL / HnRNP D ( <a href="#">HNRPDL Products</a> )
Background:	Name/Gene ID: HNRNPDL  Synonyms: HNRNPDL, HnRNP DL, HnRNP D-like, HNRPDL, JKTBP, Protein laAUF1, HNRNP, JKT41-binding protein, JKTBP2, LaAUF1
Gene ID:	9987
UniProt:	<a href="#">O14979</a>

## Application Details

Application Notes:	Approved: WB (0.2 - 1 µg/mL)  Usage: Western Blot: Suggested dilution at 1 µg/mL in 5 % skim milk / PBS buffer, and HRP conjugated anti-Rabbit IgG should be diluted in 1: 50,000 - 100,000 as second antibody. ELISA titer in peptide based assay: 1:12500.
Comment:	Target Species of Antibody: Human
Restrictions:	For Research Use only

## Handling

Format:	Lyophilized
Reconstitution:	Distilled water
Concentration:	Lot specific
Buffer:	Lyophilized from PBS with 2 % sucrose
Handling Advice:	Avoid repeat freeze-thaw cycles.
Storage:	4 °C, -20 °C
Storage Comment:	Long term: -20°C, the use of 50% glycerol is recommended if storing aliquots in -20°C for long term use (up to 1 year) Short term (less than 1 week): 4°C. Avoid freeze-thaw cycles.

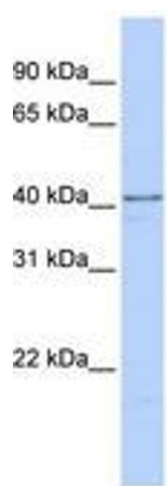


Image 1.