



[Go to Product page](#)

Datasheet for ABIN6740695

anti-CTIF/KIAA0427 antibody (AA 36-85)

1 Image

Overview

Quantity:	100 µL
Target:	CTIF/KIAA0427 (CTIF)
Binding Specificity:	AA 36-85
Reactivity:	Human, Rat
Host:	Rabbit
Clonality:	Polyclonal
Conjugate:	This CTIF/KIAA0427 antibody is un-conjugated
Application:	Western Blotting (WB)

Product Details

Immunogen:	Synthetic peptide located between aa36-85 of human CTIF (O43310, NP_055587). Percent identity by BLAST analysis: Human, Chimpanzee, Gorilla, Gibbon, Monkey, Galago (100%), Marmoset, Mouse, Elephant, Panda, Bovine, Bat, Pig, Opossum, Turkey, Zebra finch, Lizard (92%), Xenopus (85%). Type of Immunogen: Synthetic peptide
Isotype:	IgG
Specificity:	Human CTIF / KIAA0427
Predicted Reactivity:	Percent identity by BLAST analysis: Human (100%) Mouse, Bovine (92%) Rat, Xenopus (85%).
Purification:	Immunoaffinity purified

Target Details

Target:	CTIF/KIAA0427 (CTIF)
Alternative Name:	KIAA0427 / CTIF (CTIF Products)
Background:	Name/Gene ID: CTIF Synonyms: CTIF, Gm672, KIAA0427
Gene ID:	9811
NCBI Accession:	NP_055587
UniProt:	O43310

Application Details

Application Notes:	Approved: WB (0.2 - 1 µg/mL) Usage: Western Blot: Suggested dilution at 1 µg/mL in 5 % skim milk / PBS buffer, and HRP conjugated anti-Rabbit IgG should be diluted in 1: 50,000 - 100,000 as second antibody. ELISA titer in peptide based assay: 1:12500.
Comment:	Target Species of Antibody: Human
Restrictions:	For Research Use only

Handling

Format:	Lyophilized
Reconstitution:	Distilled water
Concentration:	Lot specific
Buffer:	Lyophilized from PBS with 2 % sucrose
Handling Advice:	Avoid repeat freeze-thaw cycles.
Storage:	4 °C,-20 °C
Storage Comment:	Long term: -20°C, the use of 50% glycerol is recommended if storing aliquots in -20°C for long term use (up to 1 year) Short term (less than 1 week): 4°C. Avoid freeze-thaw cycles.

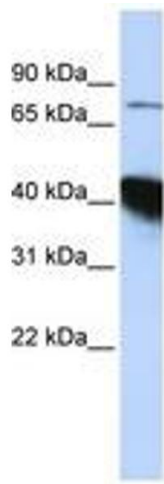


Image 1.