



## Datasheet for ABIN6740696 **anti-CNOT6 antibody (AA 35-84)**



[Go to Product page](#)

### 1 Image

#### Overview

Quantity:	100 µL
Target:	CNOT6
Binding Specificity:	AA 35-84
Reactivity:	Human, Pig, Rabbit, Cow, Dog, Horse, Chicken, Monkey
Host:	Rabbit
Clonality:	Polyclonal
Conjugate:	This CNOT6 antibody is un-conjugated
Application:	Western Blotting (WB)

#### Product Details

Immunogen:	Synthetic peptide located between aa35-84 of human CNOT6 (Q9ULM6, NP_056270). Percent identity by BLAST analysis: Human, Chimpanzee, Gorilla, Gibbon, Monkey, Galago, Marmoset, Elephant, Panda, Dog, Bovine, Rabbit, Horse, Pig, Opossum, Zebra finch, Chicken, Platypus, Lizard (100%), Mouse, Rat, Bat, Xenopus, Stickleback, Zebrafish (92%), Orangutan, Salmon (84%).  Type of Immunogen: Synthetic peptide
Isotype:	IgG
Specificity:	Human CNOT6
Predicted Reactivity:	Percent identity by BLAST analysis: Human, Dog, Bovine, Rabbit, Horse, Pig, Chicken (100%) Mouse, Rat, Xenopus, Zebrafish (92%).

## Product Details

---

Purification: Immunoaffinity purified

## Target Details

---

Target: CNOT6

Alternative Name: CNOT6 ([CNOT6 Products](#))

Background: Name/Gene ID: CNOT6

Synonyms: CNOT6, KIAA1194, Cytoplasmic deadenylase

Gene ID: 57472

NCBI Accession: [NP\\_056270](#)

UniProt: [Q9ULM6](#)

## Application Details

---

Application Notes: Approved: WB (0.2 - 1 µg/mL)

Usage: Western Blot: Suggested dilution at 1 µg/mL in 5 % skim milk / PBS buffer, and HRP conjugated anti-Rabbit IgG should be diluted in 1: 50,000 - 100,000 as second antibody. ELISA titer in peptide based assay: 1:62500.

Comment: Target Species of Antibody: Human

Restrictions: For Research Use only

## Handling

---

Format: Lyophilized

Reconstitution: Distilled water

Concentration: Lot specific

Buffer: Lyophilized from PBS with 2 % sucrose

Handling Advice: Avoid repeat freeze-thaw cycles.

Storage: 4 °C, -20 °C

Storage Comment: Long term: -20°C, the use of 50% glycerol is recommended if storing aliquots in -20°C for long term use (up to 1 year)

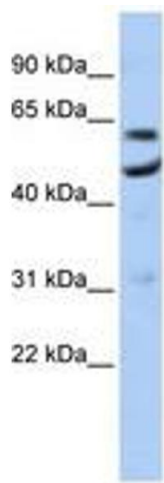
## Handling

---

Short term (less than 1 week): 4°C. Avoid freeze-thaw cycles.

## Images

---



**Image 1.**