



[Go to Product page](#)

Datasheet for ABIN6740700

anti-TMEM63B antibody (AA 324-373)

1 Image

Overview

Quantity:	100 µL
Target:	TMEM63B
Binding Specificity:	AA 324-373
Reactivity:	Human, Rat, Cow, Dog, Goat, Guinea Pig, Horse, Rabbit, Monkey, Pig
Host:	Rabbit
Clonality:	Polyclonal
Conjugate:	This TMEM63B antibody is un-conjugated
Application:	Western Blotting (WB)

Product Details

Immunogen:	Synthetic peptide located between aa324-373 of human TMEM63B (Q5T3F8, NP_060896). Percent identity by BLAST analysis: Human, Chimpanzee, Gorilla, Gibbon, Monkey, Galago, Marmoset, Goat, Elephant, Dog, Bovine, Rabbit, Horse, Pig, Guinea pig (100%), Mouse, Turkey, Zebra finch, Chicken, Lizard (92%), Bat (85%). Type of Immunogen: Synthetic peptide
Isotype:	IgG
Specificity:	Human TMEM63B
Predicted Reactivity:	Percent identity by BLAST analysis: Human, Bovine, Goat, Rabbit, Horse, Pig (100%) Rat, Chicken (92%).
Purification:	Immunoaffinity purified

Target Details

Target:	TMEM63B
Alternative Name:	TMEM63B (TMEM63B Products)
Background:	Name/Gene ID: TMEM63B Synonyms: TMEM63B, C6orf110, DJ421H19.2, RP3-421H19.2, Transmembrane protein 63B
Gene ID:	55362
NCBI Accession:	NP_060896
UniProt:	Q5T3F8

Application Details

Application Notes:	Approved: WB (0.2 - 1 µg/mL) Usage: Western Blot: Suggested dilution at 1 µg/mL in 5 % skim milk / PBS buffer, and HRP conjugated anti-Rabbit IgG should be diluted in 1: 50,000 - 100,000 as second antibody. ELISA titer in peptide based assay: 1:1562500.
Comment:	Target Species of Antibody: Human
Restrictions:	For Research Use only

Handling

Format:	Lyophilized
Reconstitution:	Distilled water
Concentration:	Lot specific
Buffer:	Lyophilized from PBS with 2 % sucrose
Handling Advice:	Avoid repeat freeze-thaw cycles.
Storage:	4 °C, -20 °C
Storage Comment:	Long term: -20°C, the use of 50% glycerol is recommended if storing aliquots in -20°C for long term use (up to 1 year) Short term (less than 1 week): 4°C. Avoid freeze-thaw cycles.

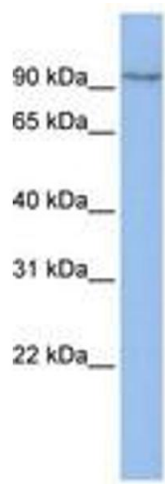


Image 1.