



Datasheet for ABIN6740703 **anti-TIA1 antibody (AA 72-121)**



[Go to Product page](#)

1 Image

Overview

Quantity:	100 µL
Target:	TIA1
Binding Specificity:	AA 72-121
Reactivity:	Human, Mouse, Rat, Rabbit, Cow, Guinea Pig, Horse, Monkey
Host:	Rabbit
Clonality:	Polyclonal
Conjugate:	This TIA1 antibody is un-conjugated
Application:	Western Blotting (WB)

Product Details

Immunogen:	Synthetic peptide located between aa72-121 of human TIA1 (P31483, NP_071505). Percent identity by BLAST analysis: Human, Chimpanzee, Gorilla, Gibbon, Monkey, Marmoset, Mouse, Rat, Elephant, Bovine, Rabbit, Horse, Guinea pig (100%), Galago, Dog, Bat, Pig (93%), Opossum (92%), Xenopus (85%). Type of Immunogen: Synthetic peptide
Isotype:	IgG
Specificity:	Human TIA1
Predicted Reactivity:	Percent identity by BLAST analysis: Human, Mouse, Rat, Bovine, Rabbit, Horse (100%) Dog, Pig (93%) Xenopus (85%).
Purification:	Immunoaffinity purified

Target Details

Target:	TIA1
Alternative Name:	TIA-1 (TIA1 Products)
Background:	Name/Gene ID: TIA1 Synonyms: TIA1, p40-TIA-1, TIA-1, Nucleolysin TIA-1, Nucleolysin TIA-1 isoform p40, RNA-binding protein TIA-1
Gene ID:	7072
NCBI Accession:	NP_071505
UniProt:	P31483

Application Details

Application Notes:	Approved: WB (0.2 - 1 µg/mL) Usage: Western Blot: Suggested dilution at 1 µg/mL in 5 % skim milk / PBS buffer, and HRP conjugated anti-Rabbit IgG should be diluted in 1: 50,000 - 100,000 as second antibody. ELISA titer in peptide based assay: 1:12500.
Comment:	Target Species of Antibody: Human
Restrictions:	For Research Use only

Handling

Format:	Lyophilized
Reconstitution:	Distilled water
Concentration:	Lot specific
Buffer:	Lyophilized from PBS with 2 % sucrose
Handling Advice:	Avoid repeat freeze-thaw cycles.
Storage:	4 °C,-20 °C
Storage Comment:	Long term: -20°C, the use of 50% glycerol is recommended if storing aliquots in -20°C for long term use (up to 1 year) Short term (less than 1 week): 4°C. Avoid freeze-thaw cycles.

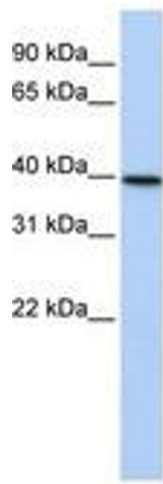


Image 1.