

Datasheet for ABIN6740705  
**anti-Nucleolar Protein 6 antibody (AA 36-85)**



[Go to Product page](#)

1 Image

Overview

Quantity:	100 µL
Target:	Nucleolar Protein 6 (NOL6)
Binding Specificity:	AA 36-85
Reactivity:	Human, Mouse, Rat, Guinea Pig, Dog, Horse, Pig
Host:	Rabbit
Clonality:	Polyclonal
Conjugate:	This Nucleolar Protein 6 antibody is un-conjugated
Application:	Western Blotting (WB)

Product Details

Immunogen:	Synthetic peptide located between aa36-85 of human NOL6 (Q9H6R4, NP_075068). Percent identity by BLAST analysis: Human, Chimpanzee, Gorilla, Marmoset, Mouse, Rat, Elephant, Dog, Horse, Pig, Guinea pig (100%), Gibbon, Monkey, Galago, Bovine, Bat, Rabbit (92%).  Type of Immunogen: Synthetic peptide
Isotype:	IgG
Specificity:	Human NOL6
Predicted Reactivity:	Percent identity by BLAST analysis: Human, Mouse, Rat, Dog, Horse, Pig (100%) Bovine, Rabbit (92%).
Purification:	Immunoaffinity purified

## Target Details

---

Target:	Nucleolar Protein 6 (NOL6)
Alternative Name:	NOL6 / NRAP ( <a href="#">NOL6 Products</a> )
Background:	Name/Gene ID: NOL6  Synonyms: NOL6, BA311H10.1, Nucleolar protein 6, UTP22
Gene ID:	65083
NCBI Accession:	<a href="#">NP_075068</a>
UniProt:	<a href="#">Q9H6R4</a>

## Application Details

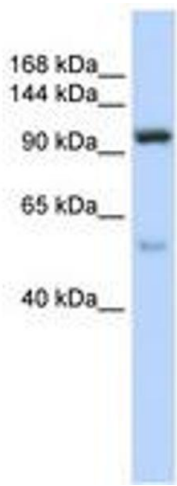
---

Application Notes:	Approved: WB (0.2 - 1 µg/mL)  Usage: Western Blot: Suggested dilution at 1 µg/mL in 5 % skim milk / PBS buffer, and HRP conjugated anti-Rabbit IgG should be diluted in 1: 50,000 - 100,000 as second antibody. ELISA titer in peptide based assay: 1:1562500.
Comment:	Target Species of Antibody: Human
Restrictions:	For Research Use only

## Handling

---

Format:	Lyophilized
Reconstitution:	Distilled water
Concentration:	Lot specific
Buffer:	Lyophilized from PBS with 2 % sucrose
Handling Advice:	Avoid repeat freeze-thaw cycles.
Storage:	4 °C, -20 °C
Storage Comment:	Long term: -20°C, the use of 50% glycerol is recommended if storing aliquots in -20°C for long term use (up to 1 year)  Short term (less than 1 week): 4°C. Avoid freeze-thaw cycles.



**Image 1.**