



[Go to Product page](#)

Datasheet for ABIN6740716
anti-NBEAL1 antibody (AA 1292-1341)

1 Image

Overview

Quantity:	100 µL
Target:	NBEAL1
Binding Specificity:	AA 1292-1341
Reactivity:	Human, Dog, Guinea Pig
Host:	Rabbit
Clonality:	Polyclonal
Conjugate:	This NBEAL1 antibody is un-conjugated
Application:	Western Blotting (WB)

Product Details

Immunogen:	Synthetic peptide located between aa1292-1341 of human NBEAL1. Percent identity by BLAST analysis: Human, Chimpanzee, Gorilla (100%), Monkey (92%), Gibbon (85%). Type of Immunogen: Synthetic peptide
Isotype:	IgG
Specificity:	Human NBEAL1
Predicted Reactivity:	Percent identity by BLAST analysis: Human (100%).
Purification:	Immunoaffinity purified

Target Details

Target:	NBEAL1
---------	--------

Target Details

Alternative Name: NBEAL1 ([NBEAL1 Products](#))

Background: Name/Gene ID: NBEAL1

Synonyms: NBEAL1, ALS2CR17, Beach, Neurobeachin-like protein 1, Neurobeachin-like 1, ALS2CR16

Gene ID: 65065

UniProt: [Q6ZS30](#)

Application Details

Application Notes: Approved: WB (0.2 - 1 µg/mL)

Usage: Western Blot: Suggested dilution at 1 µg/mL in 5 % skim milk / PBS buffer, and HRP conjugated anti-Rabbit IgG should be diluted in 1: 50,000 - 100,000 as second antibody. ELISA titer in peptide based assay: 1:12500.

Comment: Target Species of Antibody: Human

Restrictions: For Research Use only

Handling

Format: Lyophilized

Reconstitution: Distilled water

Concentration: Lot specific

Buffer: Lyophilized from PBS with 2 % sucrose

Handling Advice: Avoid repeat freeze-thaw cycles.

Storage: 4 °C,-20 °C

Storage Comment: Long term: -20°C, the use of 50% glycerol is recommended if storing aliquots in -20°C for long term use (up to 1 year)

Short term (less than 1 week): 4°C. Avoid freeze-thaw cycles.

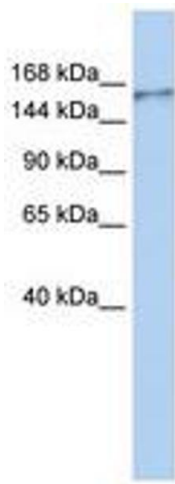


Image 1.