

Datasheet for ABIN6740728
anti-MSH5 antibody (AA 107-156)[Go to Product page](#)

1 Image

Overview

Quantity:	100 µL
Target:	MSH5
Binding Specificity:	AA 107-156
Reactivity:	Human, Mouse, Rat, Horse, Pig
Host:	Rabbit
Clonality:	Polyclonal
Conjugate:	This MSH5 antibody is un-conjugated
Application:	Western Blotting (WB)

Product Details

Immunogen:	Synthetic peptide located between aa107-156 of human MSH5 (O43196-2, NP_751897). Percent identity by BLAST analysis: Human, Chimpanzee, Marmoset, Rat, Horse (100%), Monkey (92%), Mouse (85%). Type of Immunogen: Synthetic peptide
Isotype:	IgG
Specificity:	Human MSH5
Predicted Reactivity:	Percent identity by BLAST analysis: Human, Rat, Horse (100%) Mouse (85%).
Purification:	Immunoaffinity purified

Target Details

Target:	MSH5
Alternative Name:	MSH5 (MSH5 Products)
Background:	Name/Gene ID: MSH5 Synonyms: MSH5, MutS homolog 5 (E. coli), HMSH5, MutS protein homolog 5, NG23, G7, MutS (E. coli) homolog 5, MUTSH5
Gene ID:	4439
NCBI Accession:	NP_751897
Pathways:	M Phase

Application Details

Application Notes:	Approved: WB (0.2 - 1 µg/mL) Usage: Western Blot: Suggested dilution at 1 µg/mL in 5 % skim milk / PBS buffer, and HRP conjugated anti-Rabbit IgG should be diluted in 1: 50,000 - 100,000 as second antibody. ELISA titer in peptide based assay: 1:1562500.
Comment:	Target Species of Antibody: Human
Restrictions:	For Research Use only

Handling

Format:	Lyophilized
Reconstitution:	Distilled water
Concentration:	Lot specific
Buffer:	Lyophilized from PBS with 2 % sucrose
Storage:	4 °C, -20 °C
Storage Comment:	Long term: -20°C, the use of 50% glycerol is recommended if storing aliquots in -20°C for long term use (up to 1 year) Short term (less than 1 week): 4°C. Avoid freeze-thaw cycles.

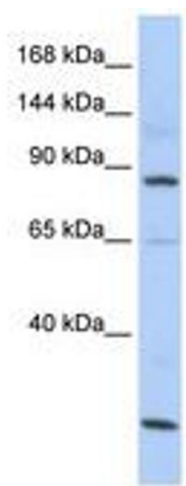


Image 1.