



[Go to Product page](#)

Datasheet for ABIN6740730
anti-ELAC1 antibody (AA 180-229)

1 Image

Overview

Quantity:	100 µL
Target:	ELAC1
Binding Specificity:	AA 180-229
Reactivity:	Human, Rat, Cow, Dog, Guinea Pig, Horse, Rabbit, Bat, Monkey, Pig
Host:	Rabbit
Clonality:	Polyclonal
Conjugate:	This ELAC1 antibody is un-conjugated
Application:	Western Blotting (WB)

Product Details

Immunogen:	Synthetic peptide located between aa180-229 of human ELAC1 (Q9H777, NP_061166). Percent identity by BLAST analysis: Human, Chimpanzee, Gorilla, Gibbon, Monkey, Galago, Marmoset, Elephant, Panda, Dog, Bovine, Bat, Rabbit, Horse, Pig, Guinea pig (100%), Mouse, Hamster (92%), Opossum, Zebra finch, Platypus (85%), Rat (84%). Type of Immunogen: Synthetic peptide
Isotype:	IgG
Specificity:	Human ELAC1
Predicted Reactivity:	Percent identity by BLAST analysis: Human, Dog, Rabbit, Horse, Pig (100%) Rat (84%).
Purification:	Immunoaffinity purified

Target Details

Target:	ELAC1
Alternative Name:	ELAC1 (ELAC1 Products)
Background:	Name/Gene ID: ELAC1 Synonyms: ELAC1, D29, Deleted in Ma29, ElaC (E. coli) homolog 1, ElaC homolog 1 (E. coli), TRNA 3 endonuclease 1, TRNA Z (short form), Ribonuclease Z 1, TRNase Z 1, ElaC homolog protein 1, RNase Z 1, TRNase ZS
Gene ID:	55520
NCBI Accession:	NP_061166
UniProt:	Q9H777

Application Details

Application Notes:	Approved: WB (0.2 - 1 µg/mL) Usage: Western Blot: Suggested dilution at 1 µg/mL in 5 % skim milk / PBS buffer, and HRP conjugated anti-Rabbit IgG should be diluted in 1: 50,000 - 100,000 as second antibody. ELISA titer in peptide based assay: 1:1562500.
Comment:	Target Species of Antibody: Human
Restrictions:	For Research Use only

Handling

Format:	Lyophilized
Reconstitution:	Distilled water
Concentration:	Lot specific
Buffer:	Lyophilized from PBS with 2 % sucrose
Handling Advice:	Avoid repeat freeze-thaw cycles.
Storage:	4 °C, -20 °C
Storage Comment:	Long term: -20°C, the use of 50% glycerol is recommended if storing aliquots in -20°C for long term use (up to 1 year) Short term (less than 1 week): 4°C. Avoid freeze-thaw cycles.

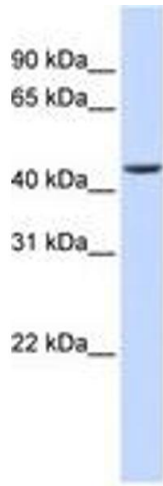


Image 1.