



[Go to Product page](#)

Datasheet for ABIN6740736

## anti-C1orf116 antibody (AA 216-265)

### 1 Image

#### Overview

Quantity:	100 µL
Target:	C1orf116 (c1orf116)
Binding Specificity:	AA 216-265
Reactivity:	Human, Mouse, Rat, Rabbit, Horse, Monkey
Host:	Rabbit
Clonality:	Polyclonal
Conjugate:	This C1orf116 antibody is un-conjugated
Application:	Western Blotting (WB)

#### Product Details

Immunogen:	Synthetic peptide located between aa216-265 of human C1orf116 (Q9BW04, NP_001077393). Percent identity by BLAST analysis: Human, Gorilla, Gibbon, Monkey, Galago, Marmoset, Mouse, Rat, Panda, Rabbit, Horse, Opossum, Platypus (100%), Dog, Bovine, Bat, Guinea pig, Turkey, Chicken (92%), Elephant, Xenopus (85%).  Type of Immunogen: Synthetic peptide
Isotype:	IgG
Specificity:	Human C1orf116
Predicted Reactivity:	Percent identity by BLAST analysis: Rabbit, Horse (100%) Dog, Guinea pig, Chicken (92%).
Purification:	Immunoaffinity purified

## Target Details

---

Target: C1orf116 (c1orf116)

Alternative Name: C1orf116 ([c1orf116 Products](#))

Background: Name/Gene ID: C1orf116

Synonyms: C1orf116, SARG

Gene ID: 79098

NCBI Accession: [NP\\_001077393](#)

UniProt: [Q9BW04](#)

## Application Details

---

Application Notes: Approved: WB (0.2 - 1 µg/mL)

Usage: Western Blot: Suggested dilution at 1 µg/mL in 5 % skim milk / PBS buffer, and HRP conjugated anti-Rabbit IgG should be diluted in 1: 50,000 - 100,000 as second antibody. ELISA titer in peptide based assay: 1:312500.

Comment: Target Species of Antibody: Human

Restrictions: For Research Use only

## Handling

---

Format: Lyophilized

Reconstitution: Distilled water

Concentration: Lot specific

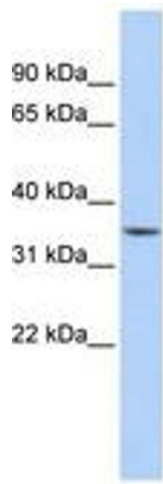
Buffer: Lyophilized from PBS with 2 % sucrose

Handling Advice: Avoid repeat freeze-thaw cycles.

Storage: 4 °C, -20 °C

Storage Comment: Long term: -20°C, the use of 50% glycerol is recommended if storing aliquots in -20°C for long term use (up to 1 year)

Short term (less than 1 week): 4°C. Avoid freeze-thaw cycles.



**Image 1.**