



[Go to Product page](#)

Datasheet for ABIN6740743
anti-DHODH antibody (AA 180-229)

1 Image

Overview

Quantity:	100 µL
Target:	DHODH
Binding Specificity:	AA 180-229
Reactivity:	Human, Mouse, Rat, Dog, Zebrafish (Danio rerio), Horse, Cow, Rabbit, Pig, Bat, Hamster, Monkey
Host:	Rabbit
Clonality:	Polyclonal
Conjugate:	This DHODH antibody is un-conjugated
Application:	Western Blotting (WB)

Product Details

Immunogen:	Synthetic peptide located between aa180-229 of human DHODH (Q02127, NP_001352). Percent identity by BLAST analysis: Human, Chimpanzee, Gorilla, Monkey, Galago, Mouse, Rat, Hamster, Elephant, Dog, Bovine, Bat, Rabbit, Horse, Pig (100%), Orangutan, Gibbon, Opossum, Guinea pig, Platypus, Arabidopsis (92%), Turkey, Chicken, Salmon, Stickleback (85%), Xenopus (84%). Type of Immunogen: Synthetic peptide
Isotype:	IgG
Specificity:	Human DHODH
Predicted Reactivity:	Percent identity by BLAST analysis: Mouse, Rat, Dog, Bovine, Rabbit, Horse, Pig (100%) Guinea pig (92%) Chicken, Zebrafish (85%) Xenopus (84%).

Product Details

Purification: Immunoaffinity purified

Target Details

Target: DHODH

Alternative Name: DHODH ([DHODH Products](#))

Background: Name/Gene ID: DHODH

Synonyms: DHODH, Dihydroorotate dehydrogenase, Dihydroorotate oxidase, Human complement of yeast URA1, POADS, URA1, DHodehase

Gene ID: 1723

NCBI Accession: [NP_001352](#)

UniProt: [Q02127](#)

Pathways: [Ribonucleoside Biosynthetic Process](#), [Protein targeting to Nucleus](#)

Application Details

Application Notes: Approved: WB (0.2 - 1 µg/mL)

Usage: Western Blot: Suggested dilution at 1 µg/mL in 5 % skim milk / PBS buffer, and HRP conjugated anti-Rabbit IgG should be diluted in 1: 50,000 - 100,000 as second antibody. ELISA titer in peptide based assay: 1:62500.

Comment: Target Species of Antibody: Human

Restrictions: For Research Use only

Handling

Format: Lyophilized

Reconstitution: Distilled water

Concentration: Lot specific

Buffer: Lyophilized from PBS with 2 % sucrose

Handling Advice: Avoid repeat freeze-thaw cycles.

Storage: 4 °C, -20 °C

Handling

Storage Comment: Long term: -20°C, the use of 50% glycerol is recommended if storing aliquots in -20°C for long term use (up to 1 year)
Short term (less than 1 week): 4°C. Avoid freeze-thaw cycles.

Images

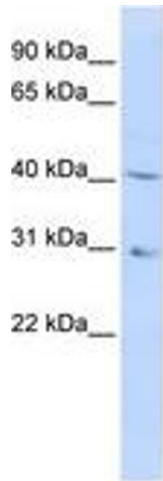


Image 1.