

Datasheet for ABIN6740745  
**anti-GNaZ antibody (AA 72-121)**[Go to Product page](#)

## 1 Image

## Overview

Quantity:	100 µL
Target:	GNaZ
Binding Specificity:	AA 72-121
Reactivity:	Human, Mouse, Rat, Monkey, Cow, Dog, Guinea Pig, Horse, Rabbit, Hamster, Pig
Host:	Rabbit
Clonality:	Polyclonal
Conjugate:	This GNaZ antibody is un-conjugated
Application:	Western Blotting (WB)

## Product Details

Immunogen:	Synthetic peptide located between aa72-121 of human GNAZ (P19086, NP_002064). Percent identity by BLAST analysis: Human, Chimpanzee, Gorilla, Gibbon, Monkey, Galago, Marmoset, Mouse, Rat, Hamster, Elephant, Panda, Dog, Cat, Bovine, Rabbit, Horse, Pig, Guinea pig, Stickleback, Pufferfish (100%), Turkey, Zebra finch, Chicken, Platypus, Xenopus (92%), Opossum (85%).  Type of Immunogen: Synthetic peptide
Isotype:	IgG
Specificity:	Human GNAZ
Predicted Reactivity:	Percent identity by BLAST analysis: Human, Mouse, Rat, Dog, Bovine, Rabbit (100%) Chicken (92%).

## Product Details

Purification: Immunoaffinity purified

## Target Details

Target: GNaZ

Alternative Name: GNAZ ([GNaZ Products](#))

Background: Name/Gene ID: GNAZ

Synonyms: GNAZ, G(x) alpha chain, Transducin alpha, Gz-alpha

Gene ID: 2781

NCBI Accession: [NP\\_002064](#)

UniProt: [P19086](#)

Pathways: [G-protein mediated Events](#)

## Application Details

Application Notes: Approved: WB (0.2 - 1 µg/mL)

Usage: Western Blot: Suggested dilution at 1 µg/mL in 5 % skim milk / PBS buffer, and HRP conjugated anti-Rabbit IgG should be diluted in 1: 50,000 - 100,000 as second antibody. ELISA titer in peptide based assay: 1:312500.

Comment: Target Species of Antibody: Human

Restrictions: For Research Use only

## Handling

Format: Lyophilized

Reconstitution: Distilled water

Concentration: Lot specific

Buffer: Lyophilized from PBS with 2 % sucrose

Handling Advice: Avoid repeat freeze-thaw cycles.

Storage: 4 °C, -20 °C

Storage Comment: Long term: -20°C, the use of 50% glycerol is recommended if storing aliquots in -20°C for long

Handling

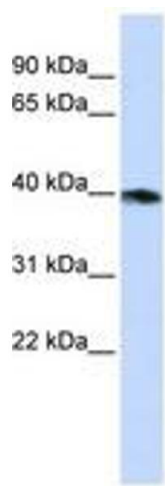
---

term use (up to 1 year)

Short term (less than 1 week): 4°C. Avoid freeze-thaw cycles.

Images

---



**Image 1.**