

Datasheet for ABIN6740754
anti-DHRS2 antibody (AA 108-157)[Go to Product page](#)

1 Image

Overview

Quantity:	100 µL
Target:	DHRS2
Binding Specificity:	AA 108-157
Reactivity:	Human, Rat, Horse, Monkey
Host:	Rabbit
Clonality:	Polyclonal
Conjugate:	This DHRS2 antibody is un-conjugated
Application:	Western Blotting (WB)

Product Details

Immunogen:	Synthetic peptide located between aa108-157 of human DHRS2 (Q53GS4, NP_005785). Percent identity by BLAST analysis: Human, Chimpanzee, Gorilla, Gibbon, Monkey, Marmoset, Horse (100%), Galago, Mouse, Elephant, Dog, Rabbit, Opossum (92%), Rat (85%). Type of Immunogen: Synthetic peptide
Isotype:	IgG
Specificity:	Human DHRS2
Predicted Reactivity:	Percent identity by BLAST analysis: Human (100%) Mouse, Rabbit (92%) Rat (85%).
Purification:	Immunoaffinity purified

Target Details

Target:	DHRS2
Alternative Name:	DHRS2 / HEP27 (DHRS2 Products)
Background:	Name/Gene ID: DHRS2 Synonyms: DHRS2, Dicarbonyl reductase HEP27, HEP27, Protein D, SDR25C1
Gene ID:	10202
NCBI Accession:	NP_005785
UniProt:	Q13268
Pathways:	C21-Steroid Hormone Metabolic Process

Application Details

Application Notes:	Approved: WB (0.2 - 1 µg/mL) Usage: Western Blot: Suggested dilution at 1 µg/mL in 5 % skim milk / PBS buffer, and HRP conjugated anti-Rabbit IgG should be diluted in 1: 50,000 - 100,000 as second antibody. ELISA titer in peptide based assay: 1:62500.
Comment:	Target Species of Antibody: Human
Restrictions:	For Research Use only

Handling

Format:	Lyophilized
Reconstitution:	Distilled water
Concentration:	Lot specific
Buffer:	Lyophilized from PBS with 2 % sucrose
Handling Advice:	Avoid repeat freeze-thaw cycles.
Storage:	4 °C,-20 °C
Storage Comment:	Long term: -20°C, the use of 50% glycerol is recommended if storing aliquots in -20°C for long term use (up to 1 year) Short term (less than 1 week): 4°C. Avoid freeze-thaw cycles.

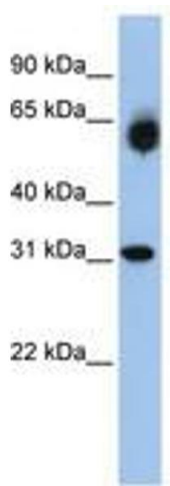


Image 1.