

Datasheet for ABIN6740774  
**anti-PLEKHA4 antibody (AA 504-553)**[Go to Product page](#)

## 1 Image

## Overview

Quantity:	100 µL
Target:	PLEKHA4
Binding Specificity:	AA 504-553
Reactivity:	Human, Mouse, Horse, Guinea Pig, Monkey
Host:	Rabbit
Clonality:	Polyclonal
Conjugate:	This PLEKHA4 antibody is un-conjugated
Application:	Western Blotting (WB)

## Product Details

Immunogen:	Synthetic peptide located between aa504-553 of human PLEKHA4 (Q9H4M7, NP_065955). Percent identity by BLAST analysis: Human, Chimpanzee, Gorilla, Gibbon, Marmoset (100%), Dog, Bovine, Bat, Rabbit, Pig (92%), Galago, Mouse, Elephant, Horse (85%), Guinea pig (84%).  Type of Immunogen: Synthetic peptide
Isotype:	IgG
Specificity:	Human PLEKHA4
Predicted Reactivity:	Percent identity by BLAST analysis: Dog, Bovine, Rabbit, Pig (92%) Mouse, Horse (85%) Guinea pig (84%).
Purification:	Immunoaffinity purified

## Target Details

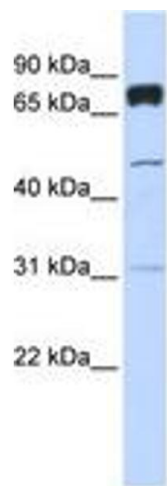
Target:	PLEKHA4
Alternative Name:	PLEKHA4 ( <a href="#">PLEKHA4 Products</a> )
Background:	Name/Gene ID: PLEKHA4  Synonyms: PLEKHA4, PEPP1, PEPP-1
Gene ID:	57664
NCBI Accession:	<a href="#">NP_065955</a>
UniProt:	<a href="#">Q9H4M7</a>

## Application Details

Application Notes:	Approved: WB (0.2 - 1 µg/mL)  Usage: Western Blot: Suggested dilution at 1 µg/mL in 5 % skim milk / PBS buffer, and HRP conjugated anti-Rabbit IgG should be diluted in 1: 50,000 - 100,000 as second antibody. ELISA titer in peptide based assay: 1:62500.
Comment:	Target Species of Antibody: Human
Restrictions:	For Research Use only

## Handling

Format:	Lyophilized
Reconstitution:	Distilled water
Concentration:	Lot specific
Buffer:	Lyophilized from PBS with 2 % sucrose
Handling Advice:	Avoid repeat freeze-thaw cycles.
Storage:	4 °C, -20 °C
Storage Comment:	Long term: -20°C, the use of 50% glycerol is recommended if storing aliquots in -20°C for long term use (up to 1 year)  Short term (less than 1 week): 4°C. Avoid freeze-thaw cycles.



**Image 1.**