



[Go to Product page](#)

Datasheet for ABIN6740780
anti-ZDHHC14 antibody (AA 108-157)

1 Image

Overview

| | |
|----------------------|--|
| Quantity: | 100 µL |
| Target: | ZDHHC14 |
| Binding Specificity: | AA 108-157 |
| Reactivity: | Human, Mouse, Rat, Rabbit, Cow, Zebrafish (Danio rerio), Dog, Guinea Pig, Horse, Xenopus laevis, Chicken, Drosophila melanogaster, Monkey, Pig |
| Host: | Rabbit |
| Clonality: | Polyclonal |
| Conjugate: | This ZDHHC14 antibody is un-conjugated |
| Application: | Western Blotting (WB) |

Product Details

| | |
|-----------------------|---|
| Immunogen: | Synthetic peptide located between aa108-157 of human ZDHHC14 (Q8IZN3, NP_078906). Percent identity by BLAST analysis: Human, Chimpanzee, Gorilla, Gibbon, Monkey, Galago, Marmoset, Mouse, Rat, Elephant, Dog, Bovine, Rabbit, Horse, Pig, Guinea pig, Turkey, Zebra finch, Chicken, Lizard, Xenopus, Stickleback, Zebrafish, Drosophila (100%), Bat, Opossum (92%). Type of Immunogen: Synthetic peptide |
| Isotype: | IgG |
| Specificity: | Human ZDHHC14 |
| Predicted Reactivity: | Percent identity by BLAST analysis: Human, Rat, Dog, Bovine, Rabbit, Horse, Pig, Guinea pig, Chicken (100%) Zebrafish (84%). |

Product Details

Purification: Immunoaffinity purified

Target Details

Target: ZDHHC14

Alternative Name: ZDHHC14 ([ZDHHC14 Products](#))

Background: Name/Gene ID: ZDHHC14

Synonyms: ZDHHC14, DHHC-14, NEW1 domain-containing protein, NEW1 domain containing protein, NEW1CP

Gene ID: 79683

NCBI Accession: [NP_078906](#)

UniProt: [Q8IZN3](#)

Application Details

Application Notes: Approved: WB (0.2 - 1 µg/mL)

Usage: Western Blot: Suggested dilution at 1 µg/mL in 5 % skim milk / PBS buffer, and HRP conjugated anti-Rabbit IgG should be diluted in 1: 50,000 - 100,000 as second antibody. ELISA titer in peptide based assay: 1:1562500.

Comment: Target Species of Antibody: Human

Restrictions: For Research Use only

Handling

Format: Lyophilized

Reconstitution: Distilled water

Concentration: Lot specific

Buffer: Lyophilized from PBS with 2 % sucrose

Handling Advice: Avoid repeat freeze-thaw cycles.

Storage: 4 °C, -20 °C

Storage Comment: Long term: -20°C, the use of 50% glycerol is recommended if storing aliquots in -20°C for long

Handling

term use (up to 1 year)

Short term (less than 1 week): 4°C. Avoid freeze-thaw cycles.

Images

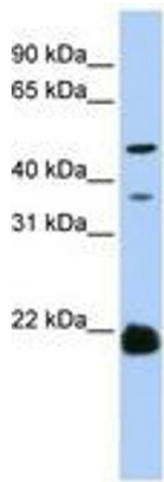


Image 1.