



Datasheet for ABIN6740787
anti-AMOTL1 antibody (AA 144-193)



[Go to Product page](#)

1 Image

Overview

Quantity:	100 µL
Target:	AMOTL1
Binding Specificity:	AA 144-193
Reactivity:	Human, Mouse, Rat, Dog, Rabbit, Guinea Pig, Bat, Monkey, Pig
Host:	Rabbit
Clonality:	Polyclonal
Conjugate:	This AMOTL1 antibody is un-conjugated
Application:	Western Blotting (WB)

Product Details

Immunogen:	Synthetic peptide located between aa144-193 of human AMOTL1 (Q8IY63, NP_570899). Percent identity by BLAST analysis: Human, Chimpanzee, Gorilla, Orangutan, Gibbon, Monkey, Marmoset, Mouse, Rat, Elephant, Panda, Bat, Rabbit, Pig, Guinea pig (100%), Galago, Bovine, Opossum (92%). Type of Immunogen: Synthetic peptide
Isotype:	IgG
Specificity:	Human AMOTL1
Predicted Reactivity:	Percent identity by BLAST analysis: Human, Mouse, Rat, Rabbit, Pig, Guinea pig (100%) Bovine (92%).
Purification:	Immunoaffinity purified

Target Details

Target: AMOTL1

Alternative Name: JEAP / AMOTL1 ([AMOTL1 Products](#))

Background: Name/Gene ID: AMOTL1

Synonyms: AMOTL1, Angiomotin like 1, Angiomotin-like protein 1, JEAP

Gene ID: 154810

NCBI Accession: [NP_570899](#)

UniProt: [Q8IY63](#)

Application Details

Application Notes: Approved: WB (0.2 - 1 µg/mL)

Usage: Western Blot: Suggested dilution at 1 µg/mL in 5 % skim milk / PBS buffer, and HRP conjugated anti-Rabbit IgG should be diluted in 1: 50,000 - 100,000 as second antibody. ELISA titer in peptide based assay: 1:312500.

Comment: Target Species of Antibody: Human

Restrictions: For Research Use only

Handling

Format: Lyophilized

Reconstitution: Distilled water

Concentration: Lot specific

Buffer: Lyophilized from PBS with 2 % sucrose

Handling Advice: Avoid repeat freeze-thaw cycles.

Storage: 4 °C, -20 °C

Storage Comment: Long term: -20°C, the use of 50% glycerol is recommended if storing aliquots in -20°C for long term use (up to 1 year)

Short term (less than 1 week): 4°C. Avoid freeze-thaw cycles.

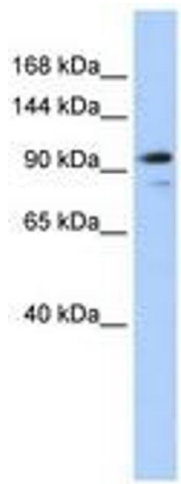


Image 1.