



[Go to Product page](#)

Datasheet for ABIN6740789  
**anti-TRIM67 antibody (AA 711-760)**

1 Image

Overview

Quantity:	100 µL
Target:	TRIM67
Binding Specificity:	AA 711-760
Reactivity:	Human, Mouse, Rabbit, Rat, Cow, Horse
Host:	Rabbit
Clonality:	Polyclonal
Conjugate:	This TRIM67 antibody is un-conjugated
Application:	Western Blotting (WB)

Product Details

Immunogen:	Synthetic peptide located between aa711-760 of human TRIM67 (Q6ZTA4, NP_001004342). Percent identity by BLAST analysis: Human, Chimpanzee, Mouse, Rat, Bovine, Rabbit, Horse (100%), Gorilla, Gibbon, Monkey, Galago, Elephant, Panda, Dog, Bat, Pig, Guinea pig (91%), Marmoset (85%).  Type of Immunogen: Synthetic peptide
Isotype:	IgG
Specificity:	Human TRIM67
Predicted Reactivity:	Percent identity by BLAST analysis: Human, Rat, Dog, Bovine, Rabbit, Horse, Pig, Guinea pig (91%).
Purification:	Immunoaffinity purified

## Target Details

---

Target:	TRIM67
Alternative Name:	TRIM67 ( <a href="#">TRIM67 Products</a> )
Background:	Name/Gene ID: TRIM67  Synonyms: TRIM67, Tripartite motif containing 67, TRIM9-like protein TNL, TRIM9-like protein, Tripartite motif-containing 67, TNL
Gene ID:	440730
NCBI Accession:	<a href="#">NP_001004342</a>
UniProt:	<a href="#">Q6ZTA4</a>

## Application Details

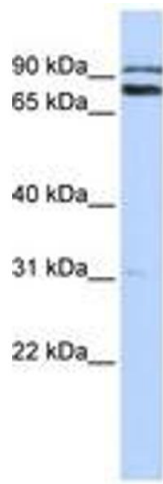
---

Application Notes:	Approved: WB (0.2 - 1 µg/mL)  Usage: Western Blot: Suggested dilution at 1 µg/mL in 5 % skim milk / PBS buffer, and HRP conjugated anti-Rabbit IgG should be diluted in 1: 50,000 - 100,000 as second antibody. ELISA titer in peptide based assay: 1:312500.
Comment:	Target Species of Antibody: Human
Restrictions:	For Research Use only

## Handling

---

Format:	Lyophilized
Reconstitution:	Distilled water
Concentration:	Lot specific
Buffer:	Lyophilized from PBS with 2 % sucrose
Handling Advice:	Avoid repeat freeze-thaw cycles.
Storage:	4 °C,-20 °C
Storage Comment:	Long term: -20°C, the use of 50% glycerol is recommended if storing aliquots in -20°C for long term use (up to 1 year)  Short term (less than 1 week): 4°C. Avoid freeze-thaw cycles.



**Image 1.**