

Datasheet for ABIN6740792
anti-RFPL4B antibody (AA 72-121)



[Go to Product page](#)

1 Image

Overview

Quantity:	100 µL
Target:	RFPL4B
Binding Specificity:	AA 72-121
Reactivity:	Human
Host:	Rabbit
Clonality:	Polyclonal
Conjugate:	This RFPL4B antibody is un-conjugated
Application:	Western Blotting (WB)

Product Details

Immunogen:	Synthetic peptide located between aa72-121 of human RFPL4B (Q6ZWI9, NP_001013756). Percent identity by BLAST analysis: Human (100%), Gorilla (92%). Type of Immunogen: Synthetic peptide
Isotype:	IgG
Specificity:	Human RFPL4B
Predicted Reactivity:	Percent identity by BLAST analysis: Human (100%).
Purification:	Immunoaffinity purified

Target Details

Target:	RFPL4B
---------	--------

Target Details

Alternative Name: RFPL4B ([RFPL4B Products](#))

Background: Name/Gene ID: RFPL4B

Synonyms: RFPL4B, RING finger protein 211, RNF211, Ret finger protein-like 4B

Gene ID: 442247

NCBI Accession: [NP_001013756](#)

UniProt: [Q6ZWI9](#)

Application Details

Application Notes: Approved: WB (0.2 - 1 µg/mL)

Usage: Western Blot: Suggested dilution at 1 µg/mL in 5 % skim milk / PBS buffer, and HRP conjugated anti-Rabbit IgG should be diluted in 1: 50,000 - 100,000 as second antibody. ELISA titer in peptide based assay: 1:62500.

Comment: Target Species of Antibody: Human

Restrictions: For Research Use only

Handling

Format: Lyophilized

Reconstitution: Distilled water

Concentration: Lot specific

Buffer: Lyophilized from PBS with 2 % sucrose

Handling Advice: Avoid repeat freeze-thaw cycles.

Storage: 4 °C, -20 °C

Storage Comment: Long term: -20°C, the use of 50% glycerol is recommended if storing aliquots in -20°C for long term use (up to 1 year)
Short term (less than 1 week): 4°C. Avoid freeze-thaw cycles.

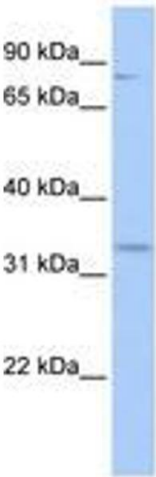


Image 1.