



[Go to Product page](#)

Datasheet for ABIN6740795
anti-FBXL2 antibody (AA 71-120)

1 Image

Overview

Quantity:	100 µL
Target:	FBXL2
Binding Specificity:	AA 71-120
Reactivity:	Human, Rat, Mouse, Cow, Dog, Horse, Rabbit, Zebrafish (Danio rerio), Guinea Pig, Bat, Monkey, Chicken
Host:	Rabbit
Clonality:	Polyclonal
Conjugate:	This FBXL2 antibody is un-conjugated
Application:	Western Blotting (WB)

Product Details

Immunogen:	Synthetic peptide located between aa71-120 of human FBXL2 (Q9UKC9, NP_036289). Percent identity by BLAST analysis: Human, Chimpanzee, Gorilla, Orangutan, Gibbon, Galago, Marmoset, Mouse, Rat, Elephant, Dog, Bovine, Bat, Horse, Guinea pig, Zebra finch, Chicken, Platypus (100%), Stickleback, Zebrafish (83%). Type of Immunogen: Synthetic peptide
Isotype:	IgG
Specificity:	Human FBXL2
Predicted Reactivity:	Percent identity by BLAST analysis: Human, Mouse, Rat, Dog, Bovine, Horse, Guinea pig, Chicken (100%) Zebrafish (83%).

Product Details

Purification: Immunoaffinity purified

Target Details

Target: FBXL2

Alternative Name: FBXL2 ([FBXL2 Products](#))

Background: Name/Gene ID: FBXL2
Family: F-Box

Synonyms: FBXL2, F-box/LRR-repeat protein 2, F-box protein FBL2/FBL3, FBL3, Fbl2

Gene ID: 25827

NCBI Accession: [NP_036289](#)

Application Details

Application Notes: Approved: WB (0.2 - 1 µg/mL)

Usage: Western Blot: Suggested dilution at 1 µg/mL in 5 % skim milk / PBS buffer, and HRP conjugated anti-Rabbit IgG should be diluted in 1: 50,000 - 100,000 as second antibody. ELISA titer in peptide based assay: 1:1562500.

Comment: Target Species of Antibody: Human

Restrictions: For Research Use only

Handling

Format: Lyophilized

Reconstitution: Distilled water

Concentration: Lot specific

Buffer: Lyophilized from PBS with 2 % sucrose

Handling Advice: Avoid repeat freeze-thaw cycles.

Storage: 4 °C, -20 °C

Storage Comment: Long term: -20°C, the use of 50% glycerol is recommended if storing aliquots in -20°C for long term use (up to 1 year)

Handling

Short term (less than 1 week): 4°C. Avoid freeze-thaw cycles.

Images

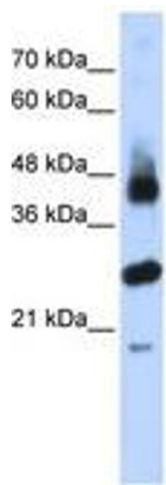


Image 1.