



Datasheet for ABIN6740798
anti-FBXO25 antibody (AA 36-85)



[Go to Product page](#)

1 Image

Overview

Quantity:	100 µL
Target:	FBXO25
Binding Specificity:	AA 36-85
Reactivity:	Human, Horse, Cow, Chicken, Monkey
Host:	Rabbit
Clonality:	Polyclonal
Conjugate:	This FBXO25 antibody is un-conjugated
Application:	Western Blotting (WB)

Product Details

Immunogen:	Synthetic peptide located between aa36-85 of human FBXO25 (Q8TCJ0, NP_036305). Percent identity by BLAST analysis: Human, Chimpanzee, Orangutan, Monkey, Galago, Marmoset, Bovine, Horse, Opossum, Turkey, Zebra finch, Chicken, Platypus, Lizard (100%), Gorilla, Mouse, Rat, Elephant, Panda, Dog, Rabbit, Guinea pig, Xenopus, Zebrafish (92%), Stickleback (85%). Type of Immunogen: Synthetic peptide
Isotype:	IgG
Specificity:	Human FBXO25
Predicted Reactivity:	Percent identity by BLAST analysis: Human, Horse, Chicken (100%) Mouse, Dog, Rabbit, Guinea pig, Xenopus, Zebrafish (92%).
Purification:	Immunoaffinity purified

Target Details

Target:	FBX025
Alternative Name:	FBX025 (FBX025 Products)
Background:	Name/Gene ID: FBX025 Family: F-Box Synonyms: FBX025, F-box only protein 25, F-box protein 25, F-box protein Fbx25, FBX25
Gene ID:	26260
NCBI Accession:	NP_036305
UniProt:	Q8TCJ0

Application Details

Application Notes:	Approved: WB (0.2 - 1 µg/mL) Usage: Western Blot: Suggested dilution at 1 µg/mL in 5 % skim milk / PBS buffer, and HRP conjugated anti-Rabbit IgG should be diluted in 1: 50,000 - 100,000 as second antibody. ELISA titer in peptide based assay: 1:312500.
Comment:	Target Species of Antibody: Human
Restrictions:	For Research Use only

Handling

Format:	Lyophilized
Reconstitution:	Distilled water
Concentration:	Lot specific
Buffer:	Lyophilized from PBS with 2 % sucrose
Handling Advice:	Avoid repeat freeze-thaw cycles.
Storage:	4 °C,-20 °C
Storage Comment:	Long term: -20°C, the use of 50% glycerol is recommended if storing aliquots in -20°C for long term use (up to 1 year) Short term (less than 1 week): 4°C. Avoid freeze-thaw cycles.

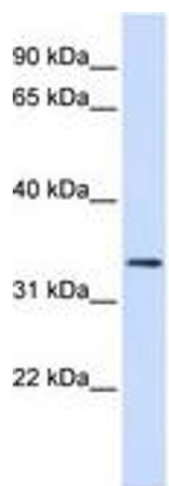


Image 1.