



[Go to Product page](#)

Datasheet for ABIN6740800

anti-FBX07 antibody (C-Term)

1 Image

Overview

Quantity:	100 µL
Target:	FBX07
Binding Specificity:	C-Term
Reactivity:	Human, Rabbit, Cow, Dog, Zebrafish (Danio rerio), Guinea Pig
Host:	Rabbit
Clonality:	Polyclonal
Conjugate:	This FBX07 antibody is un-conjugated
Application:	Western Blotting (WB)

Product Details

Immunogen:	Synthetic peptide from C-Terminus of human FBX07 (Q9Y3I1, NP_036311). Percent identity by BLAST analysis: Human, Dog, Bovine, Rabbit (100%), Gorilla, Orangutan, Gibbon, Baboon, Monkey, Galago, Marmoset, Mouse, Rat, Bat, Horse, Pig, Armadillo, Platypus (92%), Shrew, Elephant (85%), Guinea pig, Zebrafish (83%). Type of Immunogen: Synthetic peptide
Isotype:	IgG
Specificity:	Human FBX07
Predicted Reactivity:	Percent identity by BLAST analysis: Human, Dog, Rabbit (100%) Mouse, Rat, Horse, Pig (92%) Guinea pig, Zebrafish (83%).
Purification:	Immunoaffinity purified

Target Details

Target:	FBX07
Alternative Name:	FBX07 (FBX07 Products)
Background:	Name/Gene ID: FBX07 Family: F-Box Synonyms: FBX07, F-box protein 7, FBX7, FBX07, PARK15, PKPS, F-box only protein 7, FBX
Gene ID:	25793
NCBI Accession:	NP_036311
UniProt:	Q9Y311

Application Details

Application Notes:	Approved: WB (0.2 - 1 µg/mL) Usage: Western Blot: Suggested dilution at 1 µg/mL in 5 % skim milk / PBS buffer, and HRP conjugated anti-Rabbit IgG should be diluted in 1: 50,000 - 100,000 as second antibody. ELISA titer in peptide based assay: 1:1562500.
Comment:	Target Species of Antibody: Human
Restrictions:	For Research Use only

Handling

Format:	Lyophilized
Reconstitution:	Distilled water
Concentration:	Lot specific
Buffer:	Lyophilized from PBS with 2 % sucrose
Handling Advice:	Avoid repeat freeze-thaw cycles.
Storage:	4 °C,-20 °C
Storage Comment:	Long term: -20°C, the use of 50% glycerol is recommended if storing aliquots in -20°C for long term use (up to 1 year) Short term (less than 1 week): 4°C. Avoid freeze-thaw cycles.

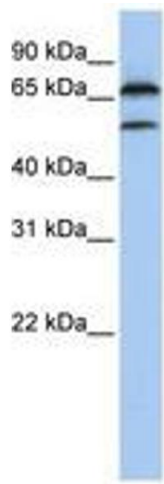


Image 1.