



[Go to Product page](#)

Datasheet for ABIN6740801
anti-UBE2S antibody (N-Term)

1 Image

Overview

Quantity:	100 µL
Target:	UBE2S
Binding Specificity:	N-Term
Reactivity:	Human, Rat, Mouse, Cow, Horse, Xenopus laevis, Monkey, Rabbit, Guinea Pig, Pig
Host:	Rabbit
Clonality:	Polyclonal
Conjugate:	This UBE2S antibody is un-conjugated
Application:	Western Blotting (WB)

Product Details

Immunogen:	Synthetic peptide from N-Terminus of human UBE2S (Q16763, NP_055316). Percent identity by BLAST analysis: Human, Chimpanzee, Gibbon, Monkey, Galago, Marmoset, Mouse, Rat, Elephant, Bovine, Rabbit, Horse, Pig, Guinea pig, Xenopus (100%). Type of Immunogen: Synthetic peptide
Isotype:	IgG
Specificity:	Human UBE2S
Predicted Reactivity:	Percent identity by BLAST analysis: Human, Mouse, Rat, Bovine, Rabbit, Pig, Guinea pig (100%).
Purification:	Immunoaffinity purified

Target Details

Target:	UBE2S
Alternative Name:	UBE2S / E2 EPF (UBE2S Products)
Background:	Name/Gene ID: UBE2S Synonyms: UBE2S, E2 EPF, E2-EPF, E2EPF, EPF5, E2-EPF5, Ubiquitin-protein ligase S, Ubiquitin carrier protein S
Gene ID:	27338
NCBI Accession:	NP_055316
UniProt:	Q16763
Pathways:	Ubiquitin Proteasome Pathway

Application Details

Application Notes:	Approved: WB (0.2 - 1 µg/mL) Usage: Western Blot: Suggested dilution at 1 µg/mL in 5 % skim milk / PBS buffer, and HRP conjugated anti-Rabbit IgG should be diluted in 1: 50,000 - 100,000 as second antibody. ELISA titer in peptide based assay: 1:312500.
Comment:	Target Species of Antibody: Human
Restrictions:	For Research Use only

Handling

Format:	Lyophilized
Reconstitution:	Distilled water
Concentration:	Lot specific
Buffer:	Lyophilized from PBS with 2 % sucrose
Handling Advice:	Avoid repeat freeze-thaw cycles.
Storage:	4 °C, -20 °C
Storage Comment:	Long term: -20°C, the use of 50% glycerol is recommended if storing aliquots in -20°C for long term use (up to 1 year) Short term (less than 1 week): 4°C. Avoid freeze-thaw cycles.

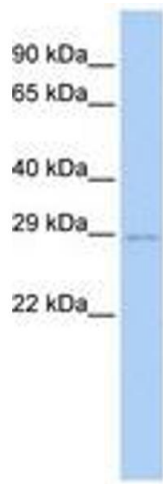


Image 1.