



Datasheet for ABIN6740805  
**anti-MARCH1 antibody (AA 36-85)**



[Go to Product page](#)

1 Image

Overview

Quantity:	100 µL
Target:	MARCH1
Binding Specificity:	AA 36-85
Reactivity:	Human, Mouse, Rat, Cow, Horse, Rabbit, Guinea Pig, Monkey, Bat, Chicken
Host:	Rabbit
Clonality:	Polyclonal
Conjugate:	This MARCH1 antibody is un-conjugated
Application:	Western Blotting (WB)

Product Details

Immunogen:	Synthetic peptide located between aa36-85 of human MARCH1 (Q8TCQ1-2, NP_060393). Percent identity by BLAST analysis: Human, Gorilla, Gibbon, Monkey, Marmoset, Mouse, Rat, Elephant, Panda, Bovine, Bat, Rabbit, Horse, Opossum, Guinea pig, Turkey, Zebra finch, Chicken, Platypus, Lizard (100%).  Type of Immunogen: Synthetic peptide
Isotype:	IgG
Specificity:	Human MARCH1
Predicted Reactivity:	Percent identity by BLAST analysis: Human, Mouse, Rat (100%).
Purification:	Immunoaffinity purified

## Target Details

---

Target: MARCH1

Alternative Name: MARCH1 ([MARCH1 Products](#))

Background: Name/Gene ID: MARCH1

Synonyms: MARCH1, MARCH-I, RING finger protein 171, RNF171

Gene ID: 55016

NCBI Accession: [NP\\_060393](#)

UniProt: [Q8TCQ1](#)

## Application Details

---

Application Notes: Approved: WB (0.2 - 1 µg/mL)

Usage: Western Blot: Suggested dilution at 1 µg/mL in 5 % skim milk / PBS buffer, and HRP conjugated anti-Rabbit IgG should be diluted in 1: 50,000 - 100,000 as second antibody. ELISA titer in peptide based assay: 1:1562500.

Comment: Target Species of Antibody: Human

Restrictions: For Research Use only

## Handling

---

Format: Lyophilized

Reconstitution: Distilled water

Concentration: Lot specific

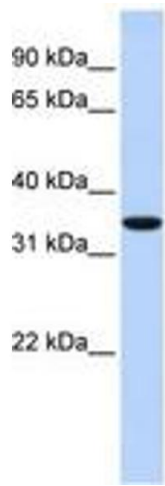
Buffer: Lyophilized from PBS with 2 % sucrose

Handling Advice: Avoid repeat freeze-thaw cycles.

Storage: 4 °C, -20 °C

Storage Comment: Long term: -20°C, the use of 50% glycerol is recommended if storing aliquots in -20°C for long term use (up to 1 year)

Short term (less than 1 week): 4°C. Avoid freeze-thaw cycles.



**Image 1.**