



[Go to Product page](#)

Datasheet for ABIN6740825
anti-RNF182 antibody (AA 144-193)

1 Image

Overview

Quantity:	100 µL
Target:	RNF182
Binding Specificity:	AA 144-193
Reactivity:	Human, Mouse, Rat, Horse, Cow, Rabbit, Dog, Hamster, Monkey
Host:	Rabbit
Clonality:	Polyclonal
Conjugate:	This RNF182 antibody is un-conjugated
Application:	Western Blotting (WB)

Product Details

Immunogen:	Synthetic peptide located between aa144-193 of human RNF182 (Q8N6D2, NP_689950). Percent identity by BLAST analysis: Human, Chimpanzee, Gorilla, Gibbon, Monkey, Galago, Marmoset, Mouse, Rat, Hamster, Panda, Dog, Rabbit, Horse (100%), Bat, Pig, Guinea pig (92%), Bovine (86%), Opossum, Turkey, Zebra finch, Chicken, Platypus (85%). Type of Immunogen: Synthetic peptide
Isotype:	IgG
Specificity:	Human RNF182
Predicted Reactivity:	Percent identity by BLAST analysis: Dog (100%) Bovine (86%) Chicken (85%).
Purification:	Immunoaffinity purified

Target Details

Target: RNF182

Alternative Name: RNF182 ([RNF182 Products](#))

Background: Name/Gene ID: RNF182

Synonyms: RNF182, Ring finger protein 182

Gene ID: 221687

NCBI Accession: [NP_689950](#)

UniProt: [Q8N6D2](#)

Application Details

Application Notes: Approved: WB (0.2 - 1 µg/mL)

Usage: Western Blot: Suggested dilution at 1 µg/mL in 5 % skim milk / PBS buffer, and HRP conjugated anti-Rabbit IgG should be diluted in 1: 50,000 - 100,000 as second antibody. ELISA titer in peptide based assay: 1:62500.

Comment: Target Species of Antibody: Human

Restrictions: For Research Use only

Handling

Format: Lyophilized

Reconstitution: Distilled water

Concentration: Lot specific

Buffer: Lyophilized from PBS with 2 % sucrose

Handling Advice: Avoid repeat freeze-thaw cycles.

Storage: 4 °C, -20 °C

Storage Comment: Long term: -20°C, the use of 50% glycerol is recommended if storing aliquots in -20°C for long term use (up to 1 year)

Short term (less than 1 week): 4°C. Avoid freeze-thaw cycles.

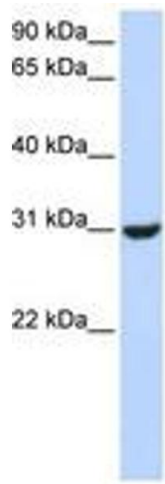


Image 1.