

Datasheet for ABIN6740836
anti-ABCC9 antibody (AA 1440-1489)



[Go to Product page](#)

1 Image

Overview

Quantity:	100 µL
Target:	ABCC9
Binding Specificity:	AA 1440-1489
Reactivity:	Human, Mouse, Rat, Dog, Monkey, Rabbit, Cow, Horse, Zebrafish (Danio rerio), Guinea Pig, Pig, Bat, Chicken
Host:	Rabbit
Clonality:	Polyclonal
Conjugate:	This ABCC9 antibody is un-conjugated
Application:	Western Blotting (WB)

Product Details

Immunogen:	<p>Synthetic peptide located between aa1440-1489 of human ABCC9 (O60706, NP_005682).</p> <p>Percent identity by BLAST analysis: Human, Chimpanzee, Gorilla, Gibbon, Monkey, Mouse, Rat, Elephant, Dog, Bovine, Bat, Rabbit, Horse, Pig, Opossum, Guinea pig, Turkey, Zebra finch, Chicken, Stickleback, Zebrafish, Arabidopsis (100%), Platypus, Xenopus, Slime mold (92%), Galago, Marmoset, Panda, Lizard, Drosophila, Rice, Grape, Spikemoss (85%).</p> <p>Type of Immunogen: Synthetic peptide</p>
Isotype:	IgG
Specificity:	Human ABCC9
Predicted Reactivity:	Percent identity by BLAST analysis: Human, Mouse, Rat, Dog, Bovine, Rabbit, Horse, Chicken,

Product Details

	Zebrafish (100%).
Purification:	Immunoaffinity purified

Target Details

Target:	ABCC9
Alternative Name:	SUR2 / ABCC9 (ABCC9 Products)
Background:	<p>Name/Gene ID: ABCC9</p> <p>Subfamily: ATP-binding cassette - ABCC/MRP</p> <p>Family: Transporter</p> <p>Synonyms: ABCC9, ATFB12, CANTU, CMD10, ABC37, Sulfonylurea receptor, Sulfonylurea receptor 2, SUR2, Sulfonylurea receptor 2A</p>
Gene ID:	10060
NCBI Accession:	NP_005682
UniProt:	O60706

Application Details

Application Notes:	<p>Approved: WB (0.2 - 1 µg/mL)</p> <p>Usage: Western Blot: Suggested dilution at 1 µg/mL in 5 % skim milk / PBS buffer, and HRP conjugated anti-Rabbit IgG should be diluted in 1: 50,000 - 100,000 as second antibody. ELISA titer in peptide based assay: 1:1562500.</p>
Comment:	Target Species of Antibody: Human
Restrictions:	For Research Use only

Handling

Format:	Lyophilized
Reconstitution:	Distilled water
Concentration:	Lot specific
Buffer:	Lyophilized from PBS with 2 % sucrose

Handling

Handling Advice:	Avoid repeat freeze-thaw cycles.
Storage:	4 °C,-20 °C
Storage Comment:	Long term: -20°C, the use of 50% glycerol is recommended if storing aliquots in -20°C for long term use (up to 1 year) Short term (less than 1 week): 4°C. Avoid freeze-thaw cycles.

Images

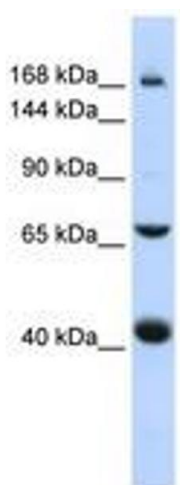


Image 1.