

Datasheet for ABIN6740840
anti-SLC2A9 antibody (AA 288-337)[Go to Product page](#)

1 Image

Overview

Quantity:	100 µL
Target:	SLC2A9
Binding Specificity:	AA 288-337
Reactivity:	Human, Mouse, Rat, Cow, Dog
Host:	Rabbit
Clonality:	Polyclonal
Conjugate:	This SLC2A9 antibody is un-conjugated
Application:	Western Blotting (WB)

Product Details

Immunogen:	Synthetic peptide located between aa288-337 of human SLC2A9 (Q9NRM0, NP_001001290). Percent identity by BLAST analysis: Human, Chimpanzee, Orangutan (100%), Gorilla, Monkey, Galago, Panda, Horse (92%), Guinea pig (90%), Marmoset, Mouse, Dog, Bovine (85%), Rat (78%). Type of Immunogen: Synthetic peptide
Isotype:	IgG
Specificity:	Human SLC2A9 / GLUT9
Predicted Reactivity:	Percent identity by BLAST analysis: Horse (92%) Guinea pig (90%) Mouse, Dog, Bovine (85%).
Purification:	Immunoaffinity purified

Target Details

Target:	SLC2A9
Alternative Name:	SLC2A9 / GLUT9 (SLC2A9 Products)
Background:	Name/Gene ID: SLC2A9 Subfamily: Sugar transporter Family: Transporter Synonyms: SLC2A9, Glucose transporter type 9, GLUT-9, GLUT9, UAQTL2, Glucose transporter 9, GLUTX, URATv1
Gene ID:	56606
NCBI Accession:	NP_001001290
UniProt:	Q9NRM0

Application Details

Application Notes:	Approved: WB (0.2 - 1 µg/mL) Usage: Western Blot: Suggested dilution at 1 µg/mL in 5 % skim milk / PBS buffer, and HRP conjugated anti-Rabbit IgG should be diluted in 1: 50,000 - 100,000 as second antibody. ELISA titer in peptide based assay: 1:1562500.
Comment:	Target Species of Antibody: Human
Restrictions:	For Research Use only

Handling

Format:	Lyophilized
Reconstitution:	Distilled water
Concentration:	Lot specific
Buffer:	Lyophilized from PBS with 2 % sucrose
Handling Advice:	Avoid repeat freeze-thaw cycles.
Storage:	4 °C, -20 °C
Storage Comment:	Long term: -20°C, the use of 50% glycerol is recommended if storing aliquots in -20°C for long term use (up to 1 year)

Handling

Short term (less than 1 week): 4°C. Avoid freeze-thaw cycles.

Images

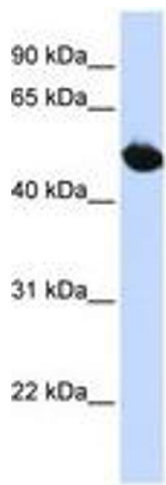


Image 1.