

Datasheet for ABIN6740844  
**anti-SLC22A13 antibody (AA 36-85)**[Go to Product page](#)

## 1 Image

## Overview

Quantity:	100 µL
Target:	SLC22A13
Binding Specificity:	AA 36-85
Reactivity:	Human, Mouse, Rat, Horse, Pig, Monkey
Host:	Rabbit
Clonality:	Polyclonal
Conjugate:	This SLC22A13 antibody is un-conjugated
Application:	Western Blotting (WB)

## Product Details

Immunogen:	Synthetic peptide located between aa36-85 of human SLC22A13 (Q9Y226, NP_004247). Percent identity by BLAST analysis: Human, Chimpanzee, Gorilla, Gibbon, Monkey, Marmoset, Mouse, Rat, Horse (100%), Elephant, Dog (92%), Galago, Bat (85%).  Type of Immunogen: Synthetic peptide
Isotype:	IgG
Specificity:	Human SLC22A13
Predicted Reactivity:	Percent identity by BLAST analysis: Human, Rat, Horse (100%) Dog (92%).
Purification:	Immunoaffinity purified

## Target Details

Target:	SLC22A13
Alternative Name:	SLC22A13 ( <a href="#">SLC22A13 Products</a> )
Background:	Name/Gene ID: SLC22A13 Subfamily: Organic cation transporter Family: Transporter  Synonyms: SLC22A13, OAT10, OCTL3, ORCTL-3, OCTL1, ORCTL3
Gene ID:	9390
NCBI Accession:	<a href="#">NP_004247</a>
UniProt:	<a href="#">Q9Y226</a>

## Application Details

Application Notes:	Approved: WB (0.2 - 1 µg/mL)  Usage: Western Blot: Suggested dilution at 1 µg/mL in 5 % skim milk / PBS buffer, and HRP conjugated anti-Rabbit IgG should be diluted in 1: 50,000 - 100,000 as second antibody. ELISA titer in peptide based assay: 1:312500.
Comment:	Target Species of Antibody: Human
Restrictions:	For Research Use only

## Handling

Format:	Lyophilized
Reconstitution:	Distilled water
Concentration:	Lot specific
Buffer:	Lyophilized from PBS with 2 % sucrose
Handling Advice:	Avoid repeat freeze-thaw cycles.
Storage:	4 °C, -20 °C
Storage Comment:	Long term: -20°C, the use of 50% glycerol is recommended if storing aliquots in -20°C for long term use (up to 1 year) Short term (less than 1 week): 4°C. Avoid freeze-thaw cycles.

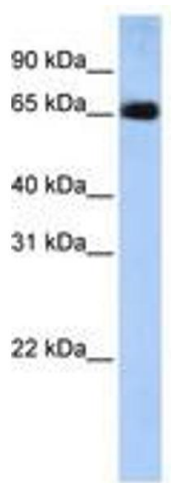


Image 1.