

Datasheet for ABIN6740845
anti-SLC16A6 antibody (AA 288-337)[Go to Product page](#)

1 Image

Overview

Quantity:	100 µL
Target:	SLC16A6
Binding Specificity:	AA 288-337
Reactivity:	Human, Rat, Cow, Dog, Horse, Rabbit, Monkey
Host:	Rabbit
Clonality:	Polyclonal
Conjugate:	This SLC16A6 antibody is un-conjugated
Application:	Western Blotting (WB)

Product Details

Immunogen:	Synthetic peptide located between aa288-337 of human SLC16A6 (O15403, NP_004685). Percent identity by BLAST analysis: Human, Chimpanzee, Gorilla, Gibbon, Monkey, Marmoset, Rabbit, Horse (100%), Mouse, Hamster, Guinea pig (92%), Rat, Panda, Dog (85%). Type of Immunogen: Synthetic peptide
Isotype:	IgG
Specificity:	Human SLC16A6
Predicted Reactivity:	Percent identity by BLAST analysis: Human, Horse (100%) Mouse (92%) Rat, Dog (85%).
Purification:	Immunoaffinity purified

Target Details

Target:	SLC16A6
Alternative Name:	SLC16A6 / MCT6 (SLC16A6 Products)
Background:	Name/Gene ID: SLC16A6 Subfamily: Monocarboxylic acid transporter Family: Transporter Synonyms: SLC16A6, Breast cancer protein BCY5, MCT 6, MCT6, Monocarboxylate transporter 7, MCT 7, MCT7, Monocarboxylate transporter 6
Gene ID:	9120
NCBI Accession:	NP_004685
UniProt:	O15403

Application Details

Application Notes:	Approved: WB (0.2 - 1 µg/mL) Usage: Western Blot: Suggested dilution at 1 µg/mL in 5 % skim milk / PBS buffer, and HRP conjugated anti-Rabbit IgG should be diluted in 1: 50,000 - 100,000 as second antibody. ELISA titer in peptide based assay: 1:12500.
Comment:	Target Species of Antibody: Human
Restrictions:	For Research Use only

Handling

Format:	Lyophilized
Reconstitution:	Distilled water
Concentration:	Lot specific
Buffer:	Lyophilized from PBS with 2 % sucrose
Handling Advice:	Avoid repeat freeze-thaw cycles.
Storage:	4 °C, -20 °C
Storage Comment:	Long term: -20°C, the use of 50% glycerol is recommended if storing aliquots in -20°C for long term use (up to 1 year)

Handling

Short term (less than 1 week): 4°C. Avoid freeze-thaw cycles.

Images

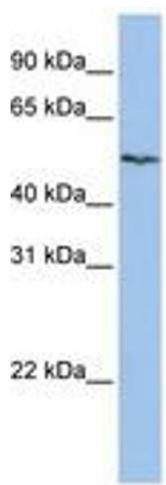


Image 1.