



Datasheet for ABIN6740847  
**anti-SLC23A2 antibody (AA 251-300)**



[Go to Product page](#)

1 Image

Overview

Quantity:	100 µL
Target:	SLC23A2
Binding Specificity:	AA 251-300
Reactivity:	Human, Rat, Mouse, Cow, Dog, Guinea Pig, Horse, Rabbit, Bat, Chicken, Monkey, Pig, Xenopus laevis
Host:	Rabbit
Clonality:	Polyclonal
Conjugate:	This SLC23A2 antibody is un-conjugated
Application:	Western Blotting (WB)

Product Details

Immunogen: Synthetic peptide located between aa251-300 of human SLC23A2 (Q9UGH3, NP\_005107).  
Percent identity by BLAST analysis: Human, Chimpanzee, Gorilla, Gibbon, Monkey, Galago, Marmoset, Mouse, Rat, Elephant, Dog, Bovine, Bat, Rabbit, Horse, Pig, Opossum, Guinea pig, Turkey, Zebra finch, Chicken, Xenopus, Stickleback (100%).

Type of Immunogen: Synthetic peptide

Isotype:	IgG
Specificity:	Human SLC23A2
Predicted Reactivity:	Percent identity by BLAST analysis: Human, Dog, Bovine, Horse, Pig, Chicken (100%).
Purification:	Immunoaffinity purified

## Target Details

---

Target:	SLC23A2
Alternative Name:	SLC23A2 / SVCT2 ( <a href="#">SLC23A2 Products</a> )
Background:	Name/Gene ID: SLC23A2 Subfamily: Nucleobase:cation symporter-2 Family: Transporter  Synonyms: SLC23A2, KIAA0238, HSVCT2, SVCT2, NBTL1, YSPL2, Vitamin C transporter 2
Gene ID:	9962
NCBI Accession:	<a href="#">NP_005107</a>
UniProt:	<a href="#">Q9UGH3</a>
Pathways:	<a href="#">Skeletal Muscle Fiber Development</a>

## Application Details

---

Application Notes:	Approved: WB (0.2 - 1 µg/mL)  Usage: Western Blot: Suggested dilution at 1 µg/mL in 5 % skim milk / PBS buffer, and HRP conjugated anti-Rabbit IgG should be diluted in 1: 50,000 - 100,000 as second antibody. ELISA titer in peptide based assay: 1:312500.
Comment:	Target Species of Antibody: Human
Restrictions:	For Research Use only

## Handling

---

Format:	Lyophilized
Reconstitution:	Distilled water
Concentration:	Lot specific
Buffer:	Lyophilized from PBS with 2 % sucrose
Handling Advice:	Avoid repeat freeze-thaw cycles.
Storage:	4 °C,-20 °C
Storage Comment:	Long term: -20°C, the use of 50% glycerol is recommended if storing aliquots in -20°C for long term use (up to 1 year)

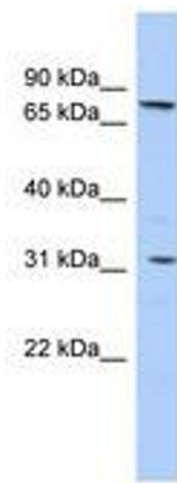
## Handling

---

Short term (less than 1 week): 4°C. Avoid freeze-thaw cycles.

## Images

---



**Image 1.**