



Datasheet for ABIN6740854
anti-SLC15A2 antibody (AA 432-481)



[Go to Product page](#)

1 Image

Overview

Quantity:	100 µL
Target:	SLC15A2
Binding Specificity:	AA 432-481
Reactivity:	Human, Pig, Mouse, Cow, Dog, Guinea Pig
Host:	Rabbit
Clonality:	Polyclonal
Conjugate:	This SLC15A2 antibody is un-conjugated
Application:	Western Blotting (WB)

Product Details

Immunogen:	Synthetic peptide located between aa432-481 of human SLC15A2 (Q16348, NP_066568). Percent identity by BLAST analysis: Human, Chimpanzee, Gibbon, Galago, Marmoset, Elephant (100%), Gorilla, Monkey, Rabbit, Horse (92%), Bovine, Bat, Pig (85%), Panda, Dog (83%), Mouse (78%). Type of Immunogen: Synthetic peptide
Isotype:	IgG
Specificity:	Human SLC15A2
Predicted Reactivity:	Percent identity by BLAST analysis: Human (100%) Horse (92%) Bovine, Pig (85%) Dog (83%).
Purification:	Immunoaffinity purified

Target Details

Target:	SLC15A2
Alternative Name:	SLC15A2 / PEPT2 (SLC15A2 Products)
Background:	Name/Gene ID: SLC15A2 Subfamily: Proton-dependent oligopeptide transporter Family: Transporter Synonyms: SLC15A2, HPEPT2, Peptide transporter 2, PEPT2
Gene ID:	6565
NCBI Accession:	NP_066568
UniProt:	Q16348

Application Details

Application Notes:	Approved: WB (0.2 - 1 µg/mL) Usage: Western Blot: Suggested dilution at 1 µg/mL in 5 % skim milk / PBS buffer, and HRP conjugated anti-Rabbit IgG should be diluted in 1: 50,000 - 100,000 as second antibody. ELISA titer in peptide based assay: 1:312500.
Comment:	Target Species of Antibody: Human
Restrictions:	For Research Use only

Handling

Format:	Lyophilized
Reconstitution:	Distilled water
Concentration:	Lot specific
Buffer:	Lyophilized from PBS with 2 % sucrose
Handling Advice:	Avoid repeat freeze-thaw cycles.
Storage:	4 °C, -20 °C
Storage Comment:	Long term: -20°C, the use of 50% glycerol is recommended if storing aliquots in -20°C for long term use (up to 1 year) Short term (less than 1 week): 4°C. Avoid freeze-thaw cycles.

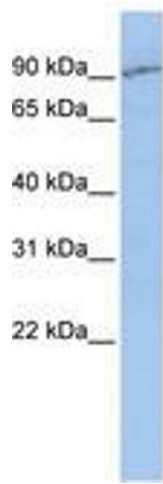


Image 1.