



Datasheet for ABIN6740861  
**anti-SLC25A34 antibody (C-Term)**



[Go to Product page](#)

1 Image

Overview

Quantity:	100 µL
Target:	SLC25A34
Binding Specificity:	C-Term
Reactivity:	Human, Mouse, Dog, Horse, Pig, Rabbit, Bat
Host:	Rabbit
Clonality:	Polyclonal
Conjugate:	This SLC25A34 antibody is un-conjugated
Application:	Western Blotting (WB)

Product Details

Immunogen:	Synthetic peptide from C-Terminus of human SLC25A34 (Q6PIV7, NP_997231). Percent identity by BLAST analysis: Human, Chimpanzee, Gorilla, Gibbon, Galago, Marmoset, Mouse, Elephant, Panda, Dog, Bat, Rabbit, Horse, Pig, Platypus, Slime mold (100%), Monkey, Rat, Bovine, Opossum, Guinea pig (92%), Xenopus, Drosophila (90%).  Type of Immunogen: Synthetic peptide
Isotype:	IgG
Specificity:	Human SLC25A34
Predicted Reactivity:	Percent identity by BLAST analysis: Dog, Rabbit, Pig (100%) Guinea pig (92%).
Purification:	Immunoaffinity purified

## Target Details

---

Target:	SLC25A34
Alternative Name:	SLC25A34 ( <a href="#">SLC25A34 Products</a> )
Background:	Name/Gene ID: SLC25A34  Synonyms: SLC25A34, RP11-169K16.2
Gene ID:	284723
NCBI Accession:	<a href="#">NP_997231</a>
UniProt:	<a href="#">Q6PIV7</a>

## Application Details

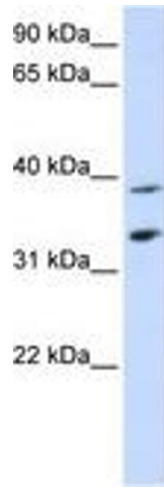
---

Application Notes:	Approved: WB (0.2 - 1 µg/mL)  Usage: Western Blot: Suggested dilution at 1 µg/mL in 5 % skim milk / PBS buffer, and HRP conjugated anti-Rabbit IgG should be diluted in 1: 50,000 - 100,000 as second antibody. ELISA titer in peptide based assay: 1:312500.
Comment:	Target Species of Antibody: Human
Restrictions:	For Research Use only

## Handling

---

Format:	Lyophilized
Reconstitution:	Distilled water
Concentration:	Lot specific
Buffer:	Lyophilized from PBS with 2 % sucrose
Handling Advice:	Avoid repeat freeze-thaw cycles.
Storage:	4 °C, -20 °C
Storage Comment:	Long term: -20°C, the use of 50% glycerol is recommended if storing aliquots in -20°C for long term use (up to 1 year)  Short term (less than 1 week): 4°C. Avoid freeze-thaw cycles.



**Image 1.**