



Datasheet for ABIN6740876 **anti-ALG11 antibody (AA 360-409)**



[Go to Product page](#)

1 Image

Overview

Quantity:	100 µL
Target:	ALG11
Binding Specificity:	AA 360-409
Reactivity:	Human, Mouse, Rat, Horse, Rabbit, Pig, Hamster, Monkey
Host:	Rabbit
Clonality:	Polyclonal
Conjugate:	This ALG11 antibody is un-conjugated
Application:	Western Blotting (WB)

Product Details

Immunogen:	Synthetic peptide located between aa360-409 of human ALG11 (Q2TAA5, NP_001004127). Percent identity by BLAST analysis: Human, Chimpanzee, Gorilla, Orangutan, Gibbon, Marmoset, Mouse, Rat, Hamster, Panda, Horse, Pig (100%), Galago, Dog, Bovine, Guinea pig (92%), Elephant, Bat, Rabbit (85%), Xenopus (84%). Type of Immunogen: Synthetic peptide
Isotype:	IgG
Specificity:	Human ALG11
Predicted Reactivity:	Percent identity by BLAST analysis: Human, Mouse, Rat, Horse, Pig (100%) Dog, Bovine (92%) Rabbit (85%).
Purification:	Immunoaffinity purified

Target Details

Target:	ALG11
Alternative Name:	ALG11 (ALG11 Products)
Background:	Name/Gene ID: ALG11 Synonyms: ALG11, CDG1P, KIAA0266, KIAA1266, GT8
Gene ID:	440138
NCBI Accession:	NP_001004127
UniProt:	Q2TAA5
Pathways:	SARS-CoV-2 Protein Interactome

Application Details

Application Notes:	Approved: WB (0.2 - 1 µg/mL) Usage: Western Blot: Suggested dilution at 1 µg/mL in 5 % skim milk / PBS buffer, and HRP conjugated anti-Rabbit IgG should be diluted in 1: 50,000 - 100,000 as second antibody. ELISA titer in peptide based assay: 1:1562500.
Comment:	Target Species of Antibody: Human
Restrictions:	For Research Use only

Handling

Format:	Lyophilized
Reconstitution:	Distilled water
Concentration:	Lot specific
Buffer:	Lyophilized from PBS with 2 % sucrose
Handling Advice:	Avoid repeat freeze-thaw cycles.
Storage:	4 °C,-20 °C
Storage Comment:	Long term: -20°C, the use of 50% glycerol is recommended if storing aliquots in -20°C for long term use (up to 1 year) Short term (less than 1 week): 4°C. Avoid freeze-thaw cycles.

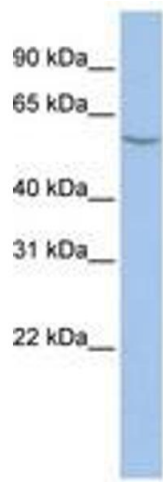


Image 1.