

Datasheet for ABIN6740883
anti-WDR33 antibody (AA 108-157)[Go to Product page](#)

1 Image

Overview

Quantity:	100 µL
Target:	WDR33
Binding Specificity:	AA 108-157
Reactivity:	Human, Mouse, Rat, Rabbit, Cow, Guinea Pig, Horse, Zebrafish (Danio rerio), Pig, Chicken, Monkey, Xenopus laevis, Bat, Drosophila melanogaster
Host:	Rabbit
Clonality:	Polyclonal
Conjugate:	This WDR33 antibody is un-conjugated
Application:	Western Blotting (WB)

Product Details

Immunogen:	Synthetic peptide located between aa108-157 of human WDR33 (Q6NUQ0, NP_001006624). Percent identity by BLAST analysis: Human, Chimpanzee, Gorilla, Gibbon, Galago, Marmoset, Mouse, Rat, Elephant, Panda, Bovine, Bat, Rabbit, Horse, Pig, Opossum, Guinea pig, Zebra finch, Chicken, Platypus, Xenopus, Pufferfish, Zebrafish, Drosophila, Beetle (100%). Type of Immunogen: Synthetic peptide
Isotype:	IgG
Specificity:	Human WDR33
Predicted Reactivity:	Percent identity by BLAST analysis: Human, Mouse, Rat, Bovine, Horse, Pig, Guinea pig, Chicken, Zebrafish (100%).

Product Details

Purification: Immunoaffinity purified

Target Details

Target: WDR33

Alternative Name: WDR33 ([WDR33 Products](#))

Background: Name/Gene ID: WDR33

Synonyms: WDR33, NET14, WD repeat domain 33, WDC146

Gene ID: 55339

NCBI Accession: [NP_001006624](#)

UniProt: [Q9C0J8](#)

Application Details

Application Notes: Approved: WB (0.2 - 1 µg/mL)

Usage: Western Blot: Suggested dilution at 1 µg/mL in 5 % skim milk / PBS buffer, and HRP conjugated anti-Rabbit IgG should be diluted in 1: 50,000 - 100,000 as second antibody. ELISA titer in peptide based assay: 1:62500.

Comment: Target Species of Antibody: Human

Restrictions: For Research Use only

Handling

Format: Lyophilized

Reconstitution: Distilled water

Concentration: Lot specific

Buffer: Lyophilized from PBS with 2 % sucrose

Handling Advice: Avoid repeat freeze-thaw cycles.

Storage: 4 °C, -20 °C

Storage Comment: Long term: -20°C, the use of 50% glycerol is recommended if storing aliquots in -20°C for long term use (up to 1 year)

Handling

Short term (less than 1 week): 4°C. Avoid freeze-thaw cycles.

Images

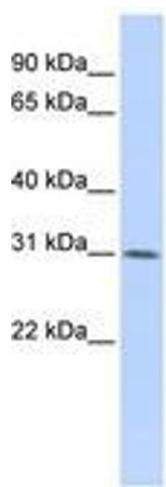


Image 1.