



[Go to Product page](#)

Datasheet for ABIN6740893
anti-NHLRC3 antibody (AA 144-193)

1 Image

Overview

Quantity:	100 µL
Target:	NHLRC3
Binding Specificity:	AA 144-193
Reactivity:	Human, Cow, Dog, Guinea Pig, Horse, Rabbit, Monkey
Host:	Rabbit
Clonality:	Polyclonal
Conjugate:	This NHLRC3 antibody is un-conjugated
Application:	Western Blotting (WB)

Product Details

Immunogen:	Synthetic peptide located between aa144-193 of human NHLRC3 (Q5JS37, NP_001012772). Percent identity by BLAST analysis: Human, Chimpanzee, Orangutan, Gibbon, Monkey, Marmoset, Elephant, Dog, Rabbit, Horse, Guinea pig, Platypus (100%), Galago, Mouse, Rat, Hamster, Panda, Pig (92%), Bovine, Opossum (85%), Stickleback (84%). Type of Immunogen: Synthetic peptide
Isotype:	IgG
Specificity:	Human NHLRC3
Predicted Reactivity:	Percent identity by BLAST analysis: Human, Orangutan, Dog (100%) Mouse, Rat (92%) Bovine (85%).
Purification:	Immunoaffinity purified

Target Details

Target: NHLRC3

Alternative Name: NHLRC3 ([NHLRC3 Products](#))

Background: Name/Gene ID: NHLRC3

Synonyms: NHLRC3, NHL repeat containing 3

Gene ID: 387921

NCBI Accession: [NP_001012772](#)

UniProt: [Q5JS37](#)

Application Details

Application Notes: Approved: WB (0.2 - 1 µg/mL)

Usage: Western Blot: Suggested dilution at 1 µg/mL in 5 % skim milk / PBS buffer, and HRP conjugated anti-Rabbit IgG should be diluted in 1: 50,000 - 100,000 as second antibody. ELISA titer in peptide based assay: 1:312500.

Comment: Target Species of Antibody: Human

Restrictions: For Research Use only

Handling

Format: Lyophilized

Reconstitution: Distilled water

Concentration: Lot specific

Buffer: Lyophilized from PBS with 2 % sucrose

Handling Advice: Avoid repeat freeze-thaw cycles.

Storage: 4 °C, -20 °C

Storage Comment: Long term: -20°C, the use of 50% glycerol is recommended if storing aliquots in -20°C for long term use (up to 1 year)

Short term (less than 1 week): 4°C. Avoid freeze-thaw cycles.

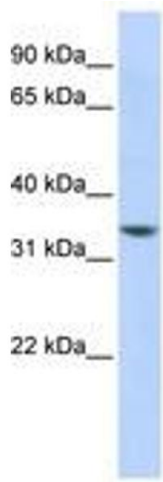


Image 1.