



Datasheet for ABIN6740894  
**anti-OR11H12 antibody (N-Term)**



[Go to Product page](#)

1 Image

Overview

Quantity:	100 µL
Target:	OR11H12
Binding Specificity:	N-Term
Reactivity:	Human
Host:	Rabbit
Clonality:	Polyclonal
Conjugate:	This OR11H12 antibody is un-conjugated
Application:	Western Blotting (WB)

Product Details

Immunogen:	Synthetic peptide from N-Terminus of human OR11H12 (B2RN74, NP_001013372). Percent identity by BLAST analysis: Human (100%), Horse, Pig (85%), Bovine (84%).  Type of Immunogen: Synthetic peptide
Isotype:	IgG
Specificity:	Human OR11H12
Predicted Reactivity:	Percent identity by BLAST analysis: Human (100%).
Purification:	Immunoaffinity purified

Target Details

Target:	OR11H12
---------	---------

## Target Details

---

Alternative Name:	OR11H12 ( <a href="#">OR11H12 Products</a> )
Background:	Name/Gene ID: OR11H12  Synonyms: OR11H12, Olfactory receptor 11H12
Gene ID:	440153
NCBI Accession:	<a href="#">NP_001013372</a>
UniProt:	<a href="#">B2RN74</a>

## Application Details

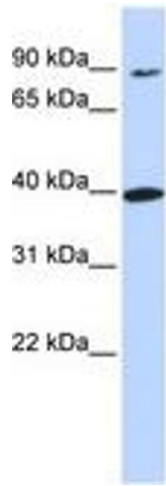
---

Application Notes:	Approved: WB (0.2 - 1 µg/mL)  Usage: Western Blot: Suggested dilution at 1 µg/mL in 5 % skim milk / PBS buffer, and HRP conjugated anti-Rabbit IgG should be diluted in 1: 50,000 - 100,000 as second antibody. ELISA titer in peptide based assay: 1:312500.
Comment:	Target Species of Antibody: Human
Restrictions:	For Research Use only

## Handling

---

Format:	Lyophilized
Reconstitution:	Distilled water
Concentration:	Lot specific
Buffer:	Lyophilized from PBS with 2 % sucrose
Handling Advice:	Avoid repeat freeze-thaw cycles.
Storage:	4 °C, -20 °C
Storage Comment:	Long term: -20°C, the use of 50% glycerol is recommended if storing aliquots in -20°C for long term use (up to 1 year)  Short term (less than 1 week): 4°C. Avoid freeze-thaw cycles.



**Image 1.**