



[Go to Product page](#)

Datasheet for ABIN6740899
anti-MPG antibody (C-Term)

1 Image

Overview

Quantity:	100 µL
Target:	MPG
Binding Specificity:	C-Term
Reactivity:	Human, Cow
Host:	Rabbit
Clonality:	Polyclonal
Conjugate:	This MPG antibody is un-conjugated
Application:	Western Blotting (WB)

Product Details

Immunogen:	Synthetic peptide from C-Terminus of human MPG (P29372, NP_001015054). Percent identity by BLAST analysis: Human, Chimpanzee, Gorilla (100%), Bovine (85%). Type of Immunogen: Synthetic peptide
Isotype:	IgG
Specificity:	Human MPG
Predicted Reactivity:	Percent identity by BLAST analysis: Human (100%) Bovine (85%).
Purification:	Immunoaffinity purified

Target Details

Target:	MPG
---------	-----

Target Details

Alternative Name: [MPG \(MPG Products\)](#)

Background: Name/Gene ID: MPG

Synonyms: MPG, 3-alkyladenine DNA glycosylase, ADPG, Anpg, AAG, APNG, CRA36.1, N-methylpurine-DNA glycosylase, PIG16, PIG11, MDG

Gene ID: 4350

NCBI Accession: [NP_001015054](#)

UniProt: [P29372](#)

Pathways: [DNA Damage Repair](#)

Application Details

Application Notes: Approved: WB (0.2 - 1 µg/mL)

Usage: Western Blot: Suggested dilution at 1 µg/mL in 5 % skim milk / PBS buffer, and HRP conjugated anti-Rabbit IgG should be diluted in 1: 50,000 - 100,000 as second antibody. ELISA titer in peptide based assay: 1:62500.

Comment: Target Species of Antibody: Human

Restrictions: For Research Use only

Handling

Format: Lyophilized

Reconstitution: Distilled water

Concentration: Lot specific

Buffer: Lyophilized from PBS with 2 % sucrose

Handling Advice: Avoid repeat freeze-thaw cycles.

Storage: 4 °C, -20 °C

Storage Comment: Long term: -20°C, the use of 50% glycerol is recommended if storing aliquots in -20°C for long term use (up to 1 year)

Short term (less than 1 week): 4°C. Avoid freeze-thaw cycles.

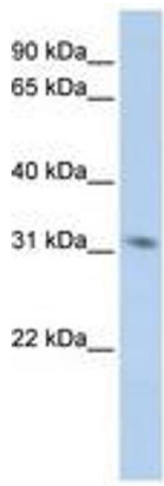


Image 1.