



[Go to Product page](#)

Datasheet for ABIN6740902  
**anti-LRRC66 antibody (AA 756-805)**

1 Image

Overview

Quantity:	100 µL
Target:	LRRC66
Binding Specificity:	AA 756-805
Reactivity:	Human
Host:	Rabbit
Clonality:	Polyclonal
Conjugate:	This LRRC66 antibody is un-conjugated
Application:	Western Blotting (WB)

Product Details

Immunogen:	Synthetic peptide located between aa756-805 of human LRRC66 (Q68CR7, NP_001019782). Percent identity by BLAST analysis: Human, Gorilla, Gibbon, Monkey (100%), Marmoset (92%).  Type of Immunogen: Synthetic peptide
Isotype:	IgG
Specificity:	Human LRRC66
Predicted Reactivity:	Percent identity by BLAST analysis: Human (100%).
Purification:	Immunoaffinity purified

Target Details

Target:	LRRC66
---------	--------

## Target Details

---

Alternative Name: [LRRRC66 \(LRRRC66 Products\)](#)

Background: Name/Gene ID: LRRRC66

Synonyms: LRRRC66

Gene ID: 339977

NCBI Accession: [NP\\_001019782](#)

UniProt: [Q68CR7](#)

## Application Details

---

Application Notes: Approved: WB (0.2 - 1 µg/mL)

Usage: Western Blot: Suggested dilution at 1 µg/mL in 5 % skim milk / PBS buffer, and HRP conjugated anti-Rabbit IgG should be diluted in 1: 50,000 - 100,000 as second antibody. ELISA titer in peptide based assay: 1:312500.

Comment: Target Species of Antibody: Human

Restrictions: For Research Use only

## Handling

---

Format: Lyophilized

Reconstitution: Distilled water

Concentration: Lot specific

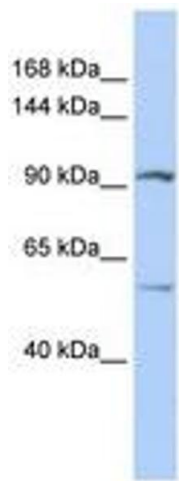
Buffer: Lyophilized from PBS with 2 % sucrose

Handling Advice: Avoid repeat freeze-thaw cycles.

Storage: 4 °C, -20 °C

Storage Comment: Long term: -20°C, the use of 50% glycerol is recommended if storing aliquots in -20°C for long term use (up to 1 year)

Short term (less than 1 week): 4°C. Avoid freeze-thaw cycles.



**Image 1.**