



## Datasheet for ABIN6740949 **anti-RRM2 antibody (AA 35-84)**



[Go to Product page](#)

### 1 Image

#### Overview

Quantity:	100 µL
Target:	RRM2
Binding Specificity:	AA 35-84
Reactivity:	Human, Guinea Pig, Horse
Host:	Rabbit
Clonality:	Polyclonal
Conjugate:	This RRM2 antibody is un-conjugated
Application:	Western Blotting (WB)

#### Product Details

Immunogen:	Synthetic peptide located between aa35-84 of human RRM2 (P31350, NP_001025). Percent identity by BLAST analysis: Human, Guinea pig (100%), Gorilla, Gibbon, Monkey, Marmoset, Dog, Bovine, Bat, Pig, Opossum (92%), Galago, Horse (85%), Platypus (83%).  Type of Immunogen: Synthetic peptide
Isotype:	IgG
Specificity:	Human RRM2
Predicted Reactivity:	Percent identity by BLAST analysis: Human (100%) Dog, Bovine, Pig (92%) Horse (85%).
Purification:	Immunoaffinity purified

## Target Details

---

Target:	RRM2
Alternative Name:	RRM2 ( <a href="#">RRM2 Products</a> )
Background:	Name/Gene ID: RRM2  Synonyms: RRM2, Ribonucleotide reductase M2, RR2, RR2M
Gene ID:	6241
NCBI Accession:	<a href="#">NP_001025</a>
UniProt:	<a href="#">P31350</a>
Pathways:	<a href="#">Mitotic G1-G1/S Phases</a>

## Application Details

---

Application Notes:	Approved: WB (0.2 - 1 µg/mL)  Usage: Western Blot: Suggested dilution at 1 µg/mL in 5 % skim milk / PBS buffer, and HRP conjugated anti-Rabbit IgG should be diluted in 1: 50,000 - 100,000 as second antibody. ELISA titer in peptide based assay: 1:1562500.  Not recommended for: IHC-P
Comment:	Target Species of Antibody: Human
Restrictions:	For Research Use only

## Handling

---

Format:	Lyophilized
Reconstitution:	Distilled water
Concentration:	Lot specific
Buffer:	Lyophilized from PBS with 2 % sucrose
Handling Advice:	Avoid repeat freeze-thaw cycles.
Storage:	4 °C,-20 °C
Storage Comment:	Long term: -20°C, the use of 50% glycerol is recommended if storing aliquots in -20°C for long term use (up to 1 year)

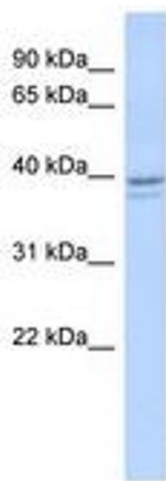
## Handling

---

Short term (less than 1 week): 4°C. Avoid freeze-thaw cycles.

## Images

---



**Image 1.**