

Datasheet for ABIN6740950  
**anti-MTHFD2 antibody (AA 180-229)**[Go to Product page](#)

## 1 Image

## Overview

Quantity:	100 µL
Target:	MTHFD2
Binding Specificity:	AA 180-229
Reactivity:	Human, Mouse, Rat, Dog, Rabbit, Guinea Pig, Horse, Cow, Bat, Hamster, Monkey, Pig
Host:	Rabbit
Clonality:	Polyclonal
Conjugate:	This MTHFD2 antibody is un-conjugated
Application:	Western Blotting (WB)

## Product Details

Immunogen:	Synthetic peptide located between aa180-229 of human MTHFD2 (P13995, NP_006627). Percent identity by BLAST analysis: Human, Chimpanzee, Gorilla, Gibbon, Monkey, Galago, Marmoset, Mouse, Rat, Hamster, Elephant, Panda, Dog, Bovine, Bat, Rabbit, Horse, Pig, Guinea pig (100%), Opossum, Turkey, Chicken, Lizard, Xenopus, Smelt, Stickleback, Zebrafish (92%), Zebra finch, Platypus, Salmon (85%).  Type of Immunogen: Synthetic peptide
Isotype:	IgG
Specificity:	Human MTHFD2
Predicted Reactivity:	Percent identity by BLAST analysis: Human, Mouse, Rat, Dog, Horse, Guinea pig (100%) Bovine, Rabbit, Pig, Chicken, Xenopus, Zebrafish (92%).

## Product Details

Purification: Immunoaffinity purified

## Target Details

Target: MTHFD2

Alternative Name: MTHFD2 ([MTHFD2 Products](#))

Background: Name/Gene ID: MTHFD2

Synonyms: MTHFD2, NMDMC

Gene ID: 10797

NCBI Accession: [NP\\_006627](#)

UniProt: [P13995](#)

## Application Details

Application Notes: Approved: WB (0.2 - 1 µg/mL)

Usage: Western Blot: Suggested dilution at 1 µg/mL in 5 % skim milk / PBS buffer, and HRP conjugated anti-Rabbit IgG should be diluted in 1: 50,000 - 100,000 as second antibody. ELISA titer in peptide based assay: 1:312500.

Comment: Target Species of Antibody: Human

Restrictions: For Research Use only

## Handling

Format: Lyophilized

Reconstitution: Distilled water

Concentration: Lot specific

Buffer: Lyophilized from PBS with 2 % sucrose

Handling Advice: Avoid repeat freeze-thaw cycles.

Storage: 4 °C, -20 °C

Storage Comment: Long term: -20°C, the use of 50% glycerol is recommended if storing aliquots in -20°C for long term use (up to 1 year)

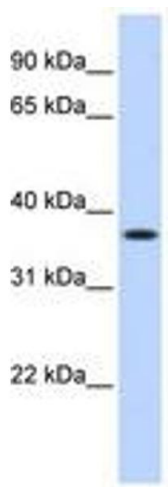
Handling

---

Short term (less than 1 week): 4°C. Avoid freeze-thaw cycles.

Images

---



**Image 1.**