



[Go to Product page](#)

Datasheet for ABIN6740964  
**anti-CENPM antibody (C-Term)**

1 Image

Overview

Quantity:	100 µL
Target:	CENPM
Binding Specificity:	C-Term
Reactivity:	Human, Cow, Monkey
Host:	Rabbit
Clonality:	Polyclonal
Conjugate:	This CENPM antibody is un-conjugated
Application:	Western Blotting (WB)

Product Details

Immunogen:	Synthetic peptide from C-Terminus of human CENPM (Q9NSP4, NP_076958). Percent identity by BLAST analysis: Human, Chimpanzee, Gibbon, Monkey (100%), Galago, Rabbit, Horse, Pig (92%).  Type of Immunogen: Synthetic peptide
Isotype:	IgG
Specificity:	Human CENPM
Predicted Reactivity:	Percent identity by BLAST analysis: Human (100%) Horse, Pig (92%).
Purification:	Immunoaffinity purified

## Target Details

---

Target:	CENPM
Alternative Name:	CENPM ( <a href="#">CENPM Products</a> )
Background:	Name/Gene ID: CENPM  Synonyms: CENPM, C22orf18, Centromere protein M, BK250D10.2, CENP-M, ICEN39, PANE1
Gene ID:	79019
NCBI Accession:	<a href="#">NP_076958</a>
UniProt:	<a href="#">Q9NSP4</a>

## Application Details

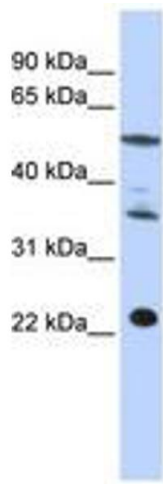
---

Application Notes:	Approved: WB (0.2 - 1 µg/mL)  Usage: Western Blot: Suggested dilution at 1 µg/mL in 5 % skim milk / PBS buffer, and HRP conjugated anti-Rabbit IgG should be diluted in 1: 50,000 - 100,000 as second antibody. ELISA titer in peptide based assay: 1:312500.
Comment:	Target Species of Antibody: Human
Restrictions:	For Research Use only

## Handling

---

Format:	Lyophilized
Reconstitution:	Distilled water
Concentration:	Lot specific
Buffer:	Lyophilized from PBS with 2 % sucrose
Handling Advice:	Avoid repeat freeze-thaw cycles.
Storage:	4 °C, -20 °C
Storage Comment:	Long term: -20°C, the use of 50% glycerol is recommended if storing aliquots in -20°C for long term use (up to 1 year)  Short term (less than 1 week): 4°C. Avoid freeze-thaw cycles.



**Image 1.**