



[Go to Product page](#)

Datasheet for ABIN6740975
anti-NDUFC2 antibody (N-Term)

1 Image

Overview

Quantity:	100 µL
Target:	NDUFC2
Binding Specificity:	N-Term
Reactivity:	Human, Mouse, Rabbit, Cow, Dog, Guinea Pig
Host:	Rabbit
Clonality:	Polyclonal
Conjugate:	This NDUFC2 antibody is un-conjugated
Application:	Western Blotting (WB)

Product Details

Immunogen:	Synthetic peptide from N-Terminus of human NDUFC2 (O95298, NP_004540). Percent identity by BLAST analysis: Human, Chimpanzee, Gorilla, Orangutan, Mouse, Elephant, Panda, Dog, Bovine, Rabbit, Opossum, Guinea pig (100%), Monkey, Rat, Pig, Chicken (92%), Xenopus (90%), Hamster (84%). Type of Immunogen: Synthetic peptide
Isotype:	IgG
Specificity:	Human NDUFC2
Predicted Reactivity:	Percent identity by BLAST analysis: Human, Dog (100%) Rat, Pig, Chicken (92%) Mouse (91%) Xenopus (90%).
Purification:	Immunoaffinity purified

Target Details

Target:	NDUFC2
Alternative Name:	NDUFC2 (NDUFC2 Products)
Background:	Name/Gene ID: NDUFC2 Synonyms: NDUFC2, CI-B14.5b, Complex I-B14.5b, NADHDH2, B14.5b, Complex I subunit B14.5b, HLC-1
Gene ID:	4718
NCBI Accession:	NP_004540
UniProt:	O95298

Application Details

Application Notes:	Approved: WB (0.2 - 1 µg/mL) Usage: Western Blot: Suggested dilution at 1 µg/mL in 5 % skim milk / PBS buffer, and HRP conjugated anti-Rabbit IgG should be diluted in 1: 50,000 - 100,000 as second antibody. ELISA titer in peptide based assay: 1:62500.
Comment:	Target Species of Antibody: Human
Restrictions:	For Research Use only

Handling

Format:	Lyophilized
Reconstitution:	Distilled water
Concentration:	Lot specific
Buffer:	Lyophilized from PBS with 2 % sucrose
Handling Advice:	Avoid repeat freeze-thaw cycles.
Storage:	4 °C,-20 °C
Storage Comment:	Long term: -20°C, the use of 50% glycerol is recommended if storing aliquots in -20°C for long term use (up to 1 year) Short term (less than 1 week): 4°C. Avoid freeze-thaw cycles.

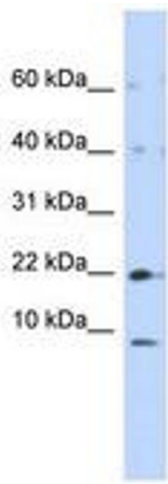


Image 1.