



[Go to Product page](#)

Datasheet for ABIN6740981

anti-Tetraspanin 2 antibody (AA 108-157)

1 Image

Overview

Quantity:	100 µL
Target:	Tetraspanin 2 (TSPAN2)
Binding Specificity:	AA 108-157
Reactivity:	Human, Mouse, Dog, Cow, Horse, Rabbit, Monkey
Host:	Rabbit
Clonality:	Polyclonal
Conjugate:	This Tetraspanin 2 antibody is un-conjugated
Application:	Western Blotting (WB)

Product Details

Immunogen:	Synthetic peptide located between aa108-157 of human TSPAN2 (O60636, NP_005716). Percent identity by BLAST analysis: Human, Chimpanzee, Gorilla, Gibbon, Monkey, Marmoset (100%), Galago, Elephant, Bat (92%), Rabbit, Pig (85%), Platypus (83%), Mouse (78%). Type of Immunogen: Synthetic peptide
Isotype:	IgG
Specificity:	Human TSPAN2
Predicted Reactivity:	Percent identity by BLAST analysis: Human (100%) Rabbit (85%).
Purification:	Immunoaffinity purified

Target Details

Target:	Tetraspanin 2 (TSPAN2)
Alternative Name:	TSPAN2 (TSPAN2 Products)
Background:	Name/Gene ID: TSPAN2 Family: Tetraspan Synonyms: TSPAN2, NET3, New EST tetraspan 3, Tetraspanin 2, Tetraspanin-2, Tetraspan 2, TSN2, Tetraspan NET-3, Tetraspan TM4SF, Tetraspanin 2 isoform, TSPAN-2
Gene ID:	10100
NCBI Accession:	NP_005716
UniProt:	O60636

Application Details

Application Notes:	Approved: WB (0.2 - 1 µg/mL) Usage: Western Blot: Suggested dilution at 1 µg/mL in 5 % skim milk / PBS buffer, and HRP conjugated anti-Rabbit IgG should be diluted in 1: 50,000 - 100,000 as second antibody. ELISA titer in peptide based assay: 1:312500.
Comment:	Target Species of Antibody: Human
Restrictions:	For Research Use only

Handling

Format:	Lyophilized
Reconstitution:	Distilled water
Concentration:	Lot specific
Buffer:	Lyophilized from PBS with 2 % sucrose
Handling Advice:	Avoid repeat freeze-thaw cycles.
Storage:	4 °C, -20 °C
Storage Comment:	Long term: -20°C, the use of 50% glycerol is recommended if storing aliquots in -20°C for long term use (up to 1 year) Short term (less than 1 week): 4°C. Avoid freeze-thaw cycles.

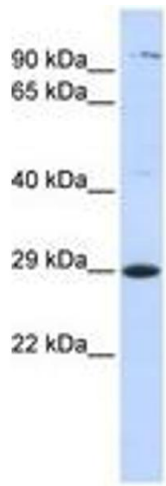


Image 1.