



[Go to Product page](#)

Datasheet for ABIN6740983

## anti-GCS1 antibody (AA 144-193)

### 1 Image

#### Overview

Quantity:	100 µL
Target:	GCS1 (MOGS)
Binding Specificity:	AA 144-193
Reactivity:	Human, Mouse, Rat, Horse, Rabbit, Zebrafish (Danio rerio), Cow, Dog, Guinea Pig, Bat, Monkey, Pig
Host:	Rabbit
Clonality:	Polyclonal
Conjugate:	This GCS1 antibody is un-conjugated
Application:	Western Blotting (WB)

#### Product Details

Immunogen:	Synthetic peptide located between aa144-193 of human MOGS (Q13724, NP_006293). Percent identity by BLAST analysis: Human, Chimpanzee, Gibbon, Monkey, Galago, Marmoset, Mouse, Elephant, Panda, Dog, Bovine, Bat, Rabbit, Horse, Pig, Guinea pig (100%), Opossum (92%), Rat (85%), Xenopus, Stickleback, Zebrafish (84%).  Type of Immunogen: Synthetic peptide
Isotype:	IgG
Specificity:	Human MOGS / GCS1
Predicted Reactivity:	Percent identity by BLAST analysis: Human, Mouse, Dog, Bovine, Hamster (100%) Rat (85%) Xenopus, Pufferfish, Zebrafish (84%).

## Product Details

---

Purification: Immunoaffinity purified

## Target Details

---

Target: GCS1 (MOGS)

Alternative Name: GCS1 / MOGS ([MOGS Products](#))

Background: Name/Gene ID: MOGS

Synonyms: MOGS, CDG2B, CWH41, DER7, Glucosidase I, Processing A-glucosidase I, GCS1

Gene ID: 7841

NCBI Accession: [NP\\_006293](#)

UniProt: [Q13724](#)

Pathways: [SARS-CoV-2 Protein Interactome](#)

## Application Details

---

Application Notes: Approved: WB (0.2 - 1 µg/mL)

Usage: Western Blot: Suggested dilution at 1 µg/mL in 5 % skim milk / PBS buffer, and HRP conjugated anti-Rabbit IgG should be diluted in 1: 50,000 - 100,000 as second antibody. ELISA titer in peptide based assay: 1:312500.

Comment: Target Species of Antibody: Human

Restrictions: For Research Use only

## Handling

---

Format: Lyophilized

Reconstitution: Distilled water

Concentration: Lot specific

Buffer: Lyophilized from PBS with 2 % sucrose

Handling Advice: Avoid repeat freeze-thaw cycles.

Storage: 4 °C, -20 °C

Storage Comment: Long term: -20°C, the use of 50% glycerol is recommended if storing aliquots in -20°C for long

## Handling

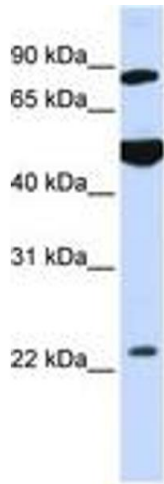
---

term use (up to 1 year)

Short term (less than 1 week): 4°C. Avoid freeze-thaw cycles.

## Images

---



**Image 1.**