



[Go to Product page](#)

Datasheet for ABIN6740987
anti-CSPG5 antibody (AA 108-157)

1 Image

Overview

| | |
|----------------------|--------------------------------------|
| Quantity: | 100 µL |
| Target: | CSPG5 |
| Binding Specificity: | AA 108-157 |
| Reactivity: | Human, Rat, Mouse, Guinea Pig |
| Host: | Rabbit |
| Clonality: | Polyclonal |
| Conjugate: | This CSPG5 antibody is un-conjugated |
| Application: | Western Blotting (WB) |

Product Details

| | |
|-----------------------|---|
| Immunogen: | Synthetic peptide located between aa108-157 of human CSPG5 (O95196, NP_006565). Percent identity by BLAST analysis: Human, Chimpanzee, Gorilla, Galago, Marmoset, Mouse, Rat (100%), Monkey, Panda, Bovine, Horse, Pig (92%), Guinea pig (85%). Type of Immunogen: Synthetic peptide |
| Isotype: | IgG |
| Specificity: | Human CSPG5 / Neuroglycan C |
| Predicted Reactivity: | Percent identity by BLAST analysis: Human, Mouse, Rat (100%) Bovine, Horse, Pig (92%) Guinea pig (85%). |
| Purification: | Immunoaffinity purified |

Target Details

| | |
|-------------------|---|
| Target: | CSPG5 |
| Alternative Name: | CSPG5 / Neuroglycan C (CSPG5 Products) |
| Background: | Name/Gene ID: CSPG5 Synonyms: CSPG5, CALEB, Neuroglycan C, NGC |
| Gene ID: | 10675 |
| NCBI Accession: | NP_006565 |
| UniProt: | O95196 |
| Pathways: | Glycosaminoglycan Metabolic Process |

Application Details

| | |
|--------------------|--|
| Application Notes: | Approved: WB (0.2 - 1 µg/mL) Usage: Western Blot: Suggested dilution at 1 µg/mL in 5 % skim milk / PBS buffer, and HRP conjugated anti-Rabbit IgG should be diluted in 1: 50,000 - 100,000 as second antibody. ELISA titer in peptide based assay: 1:62500. |
| Comment: | Target Species of Antibody: Human |
| Restrictions: | For Research Use only |

Handling

| | |
|------------------|---|
| Format: | Lyophilized |
| Reconstitution: | Distilled water |
| Concentration: | Lot specific |
| Buffer: | Lyophilized from PBS with 2 % sucrose |
| Handling Advice: | Avoid repeat freeze-thaw cycles. |
| Storage: | 4 °C,-20 °C |
| Storage Comment: | Long term: -20°C, the use of 50% glycerol is recommended if storing aliquots in -20°C for long term use (up to 1 year) Short term (less than 1 week): 4°C. Avoid freeze-thaw cycles. |

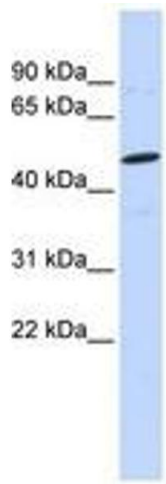


Image 1.