



[Go to Product page](#)

Datasheet for ABIN6740992
anti-MMP23B antibody (C-Term)

1 Image

Overview

Quantity:	100 µL
Target:	MMP23B
Binding Specificity:	C-Term
Reactivity:	Human, Rat, Mouse, Dog, Cow, Guinea Pig, Monkey, Pig
Host:	Rabbit
Clonality:	Polyclonal
Conjugate:	This MMP23B antibody is un-conjugated
Application:	Western Blotting (WB)

Product Details

Immunogen:	Synthetic peptide from C-Terminus of human MMP23B (O75900, NP_008914). Percent identity by BLAST analysis: Human, Chimpanzee, Gorilla, Monkey, Galago, Marmoset, Mouse, Rat, Panda, Dog, Bovine, Pig, Guinea pig (100%). Type of Immunogen: Synthetic peptide
Isotype:	IgG
Specificity:	Human MMP23B
Predicted Reactivity:	Percent identity by BLAST analysis: Human, Dog, Bovine, Guinea pig (100%).
Purification:	Immunoaffinity purified

Target Details

Target:	MMP23B
Alternative Name:	MMP23B / MMP-23B (MMP23B Products)
Background:	Name/Gene ID: MMP23B Subfamily: Metallopeptidase Other Family: Protease Synonyms: MMP23B, CA-MMP, Matrix metallopeptidase 23B, Matrix metalloproteinase 23B, Matrix metalloproteinase 22, Matrix metalloproteinase-21, Matrix metalloproteinase-22, Matrix metalloproteinase-23, MIFR-2, MMP-21, MMP23A, MIFR, MIFR-1, Femalysin, Matrix metalloproteinase 23A, MMP 23, MMP-22, MMP-23, MMP22
Gene ID:	8510
NCBI Accession:	NP_008914

Application Details

Application Notes:	Approved: WB (0.2 - 1 µg/mL) Usage: Western Blot: Suggested dilution at 1 µg/mL in 5 % skim milk / PBS buffer, and HRP conjugated anti-Rabbit IgG should be diluted in 1: 50,000 - 100,000 as second antibody. ELISA titer in peptide based assay: 1:12500.
Comment:	Target Species of Antibody: Human
Restrictions:	For Research Use only

Handling

Format:	Lyophilized
Reconstitution:	Distilled water
Concentration:	Lot specific
Buffer:	Lyophilized from PBS with 2 % sucrose
Handling Advice:	Avoid repeat freeze-thaw cycles.
Storage:	4 °C,-20 °C
Storage Comment:	Long term: -20°C, the use of 50% glycerol is recommended if storing aliquots in -20°C for long term use (up to 1 year)

Handling

Short term (less than 1 week): 4°C. Avoid freeze-thaw cycles.

Images

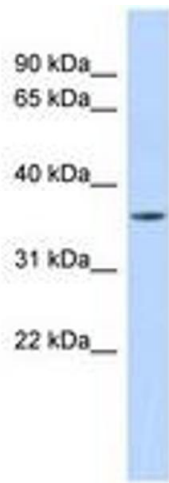


Image 1.