



[Go to Product page](#)

Datasheet for ABIN6740993
anti-TMEM115 antibody (AA 35-84)

1 Image

Overview

Quantity:	100 µL
Target:	TMEM115
Binding Specificity:	AA 35-84
Reactivity:	Human, Mouse, Rat, Cow, Dog, Guinea Pig, Rabbit, Zebrafish (Danio rerio), Bat, Hamster, Monkey, Pig
Host:	Rabbit
Clonality:	Polyclonal
Conjugate:	This TMEM115 antibody is un-conjugated
Application:	Western Blotting (WB)

Product Details

Immunogen:	Synthetic peptide located between aa35-84 of human TMEM115 (Q12893, NP_008955). Percent identity by BLAST analysis: Human, Chimpanzee, Gorilla, Gibbon, Monkey, Galago, Marmoset, Mouse, Rat, Hamster, Elephant, Panda, Dog, Bovine, Bat, Rabbit, Pig, Opossum, Guinea pig (100%), Salmon, Stickleback (92%), Lizard, Xenopus, Zebrafish (84%). Type of Immunogen: Synthetic peptide
Isotype:	IgG
Specificity:	Human TMEM115 / PL6
Predicted Reactivity:	Percent identity by BLAST analysis: Mouse, Rat, Dog, Rabbit (100%) Zebrafish (84%).
Purification:	Immunoaffinity purified

Target Details

Target:	TMEM115
Alternative Name:	TMEM115 (TMEM115 Products)
Background:	Name/Gene ID: TMEM115 Synonyms: TMEM115, Placental protein 6, PP6, Protein PL6, Transmembrane protein 115, PL6
Gene ID:	11070
NCBI Accession:	NP_008955
UniProt:	Q12893

Application Details

Application Notes:	Approved: WB (0.2 - 1 µg/mL) Usage: Western Blot: Suggested dilution at 1 µg/mL in 5 % skim milk / PBS buffer, and HRP conjugated anti-Rabbit IgG should be diluted in 1: 50,000 - 100,000 as second antibody. ELISA titer in peptide based assay: 1:1562500.
Comment:	Target Species of Antibody: Human
Restrictions:	For Research Use only

Handling

Format:	Lyophilized
Reconstitution:	Distilled water
Concentration:	Lot specific
Buffer:	Lyophilized from PBS with 2 % sucrose
Handling Advice:	Avoid repeat freeze-thaw cycles.
Storage:	4 °C, -20 °C
Storage Comment:	Long term: -20°C, the use of 50% glycerol is recommended if storing aliquots in -20°C for long term use (up to 1 year) Short term (less than 1 week): 4°C. Avoid freeze-thaw cycles.

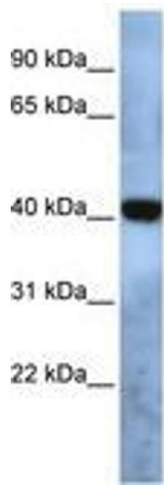


Image 1.