

Datasheet for ABIN6741010
anti-SDHB antibody (C-Term)



[Go to Product page](#)

1 Image

Overview

Quantity:	100 µL
Target:	SDHB
Binding Specificity:	C-Term
Reactivity:	Human, Mouse, Guinea Pig, Cow, Dog, Horse, Rabbit, Goat, Pig, Monkey, Hamster
Host:	Rabbit
Clonality:	Polyclonal
Conjugate:	This SDHB antibody is un-conjugated
Application:	Western Blotting (WB)

Product Details

Immunogen:	Synthetic peptide from C-Terminus of human SDHB (P21912, NP_002991). Percent identity by BLAST analysis: Human, Chimpanzee, Gorilla, Gibbon, Monkey, Galago, Marmoset, Mouse, Goat, Hamster, Elephant, Panda, Dog, Cat, Bovine, Rabbit, Horse, Pig, Guinea pig (100%), Rat, Opossum, Xenopus (92%), Zebra finch (91%), Turkey, Chicken, Armadillo, Platypus, Trout, Catfish, Salmon, Smelt, Sablefish, Zebrafish (85%). Type of Immunogen: Synthetic peptide
Isotype:	IgG
Specificity:	Human SDHB
Predicted Reactivity:	Percent identity by BLAST analysis: Human, Mouse, Bovine, Rabbit, Horse, Guinea pig (100%).
Purification:	Immunoaffinity purified

Target Details

Target:	SDHB
Alternative Name:	SDHB (SDHB Products)
Background:	Name/Gene ID: SDHB Synonyms: SDHB, SDH1, SDHIP, SDH, IP, PGL4, SDH2
Gene ID:	6390
NCBI Accession:	NP_002991
UniProt:	P21912

Application Details

Application Notes:	Approved: WB (0.2 - 1 µg/mL) Usage: Western Blot: Suggested dilution at 1 µg/mL in 5 % skim milk / PBS buffer, and HRP conjugated anti-Rabbit IgG should be diluted in 1: 50,000 - 100,000 as second antibody. ELISA titer in peptide based assay: 1:62500. Not recommended for: IHC-P
Comment:	Target Species of Antibody: Human
Restrictions:	For Research Use only

Handling

Format:	Lyophilized
Reconstitution:	Distilled water
Concentration:	Lot specific
Buffer:	Lyophilized from PBS with 2 % sucrose
Handling Advice:	Avoid repeat freeze-thaw cycles.
Storage:	4 °C, -20 °C
Storage Comment:	Long term: -20°C, the use of 50% glycerol is recommended if storing aliquots in -20°C for long term use (up to 1 year) Short term (less than 1 week): 4°C. Avoid freeze-thaw cycles.

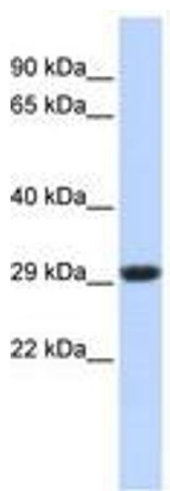


Image 1.