

Datasheet for ABIN6741013
anti-PPP2R5A antibody (AA 107-156)[Go to Product page](#)

1 Image

Overview

Quantity:	100 µL
Target:	PPP2R5A
Binding Specificity:	AA 107-156
Reactivity:	Human, Mouse, Rat, Cow, Dog, Pig, Monkey, Rabbit, Guinea Pig, Horse, Chicken, Xenopus laevis, Bat
Host:	Rabbit
Clonality:	Polyclonal
Conjugate:	This PPP2R5A antibody is un-conjugated
Application:	Western Blotting (WB)

Product Details

Immunogen:	Synthetic peptide located between aa107-156 of human PPP2R5A (Q15172, NP_006234). Percent identity by BLAST analysis: Human, Chimpanzee, Gibbon, Monkey, Galago, Marmoset, Mouse, Rat, Dog, Bovine, Bat, Rabbit, Horse, Pig, Opossum, Guinea pig, Turkey, Zebra finch, Chicken, Platypus, Xenopus, Stickleback (100%), Elephant, Zebrafish (92%), Gorilla, Baboon, Goat, Hamster, Panda, Armadillo, Drosophila (85%). Type of Immunogen: Synthetic peptide
Isotype:	IgG
Specificity:	Human PPP2R5A
Predicted Reactivity:	Percent identity by BLAST analysis: Human, Mouse, Rat, Dog, Bovine, Rabbit, Horse, Pig, Guinea

Product Details

pig, Chicken, Xenopus (100%) Zebrafish (92%).

Purification: Immunoaffinity purified

Target Details

Target: PPP2R5A

Alternative Name: PPP2R5A ([PPP2R5A Products](#))

Background: Name/Gene ID: PPP2R5A

Synonyms: PPP2R5A, B56A, PP2A B subunit isoform B-alpha, PR61A, PR61alpha

Gene ID: 5525

NCBI Accession: [NP_006234](#)

UniProt: [Q15172](#)

Pathways: [PI3K-Akt Signaling](#)

Application Details

Application Notes: Approved: WB (0.2 - 1 µg/mL)

Usage: Western Blot: Suggested dilution at 1 µg/mL in 5 % skim milk / PBS buffer, and HRP conjugated anti-Rabbit IgG should be diluted in 1: 50,000 - 100,000 as second antibody. ELISA titer in peptide based assay: 1:12500.

Comment: Target Species of Antibody: Human

Restrictions: For Research Use only

Handling

Format: Lyophilized

Reconstitution: Distilled water

Concentration: Lot specific

Buffer: Lyophilized from PBS with 2 % sucrose

Handling Advice: Avoid repeat freeze-thaw cycles.

Storage: 4 °C,-20 °C

Handling

Storage Comment:	Long term: -20°C, the use of 50% glycerol is recommended if storing aliquots in -20°C for long term use (up to 1 year)
	Short term (less than 1 week): 4°C. Avoid freeze-thaw cycles.

Images

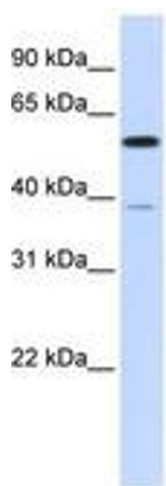


Image 1.